

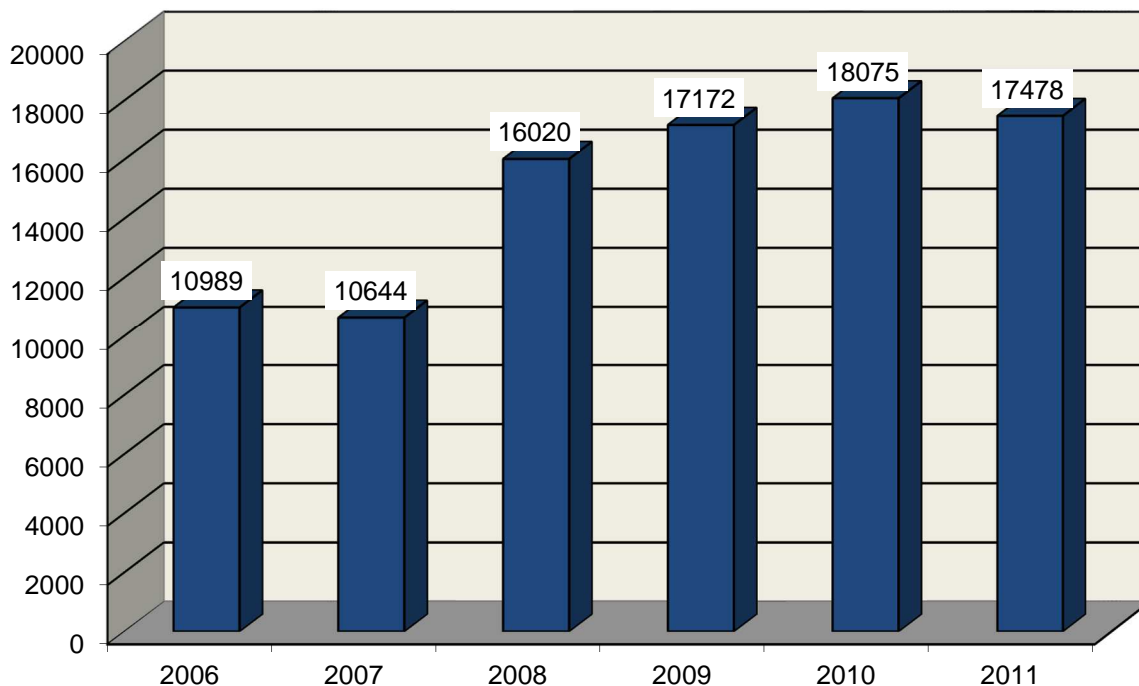


VIAS VERDES CORONÁRIA E DO AVC

Relatório de Atividades 2011

Via Verde Coronária

Doentes Admitidos na Unidade Coronária

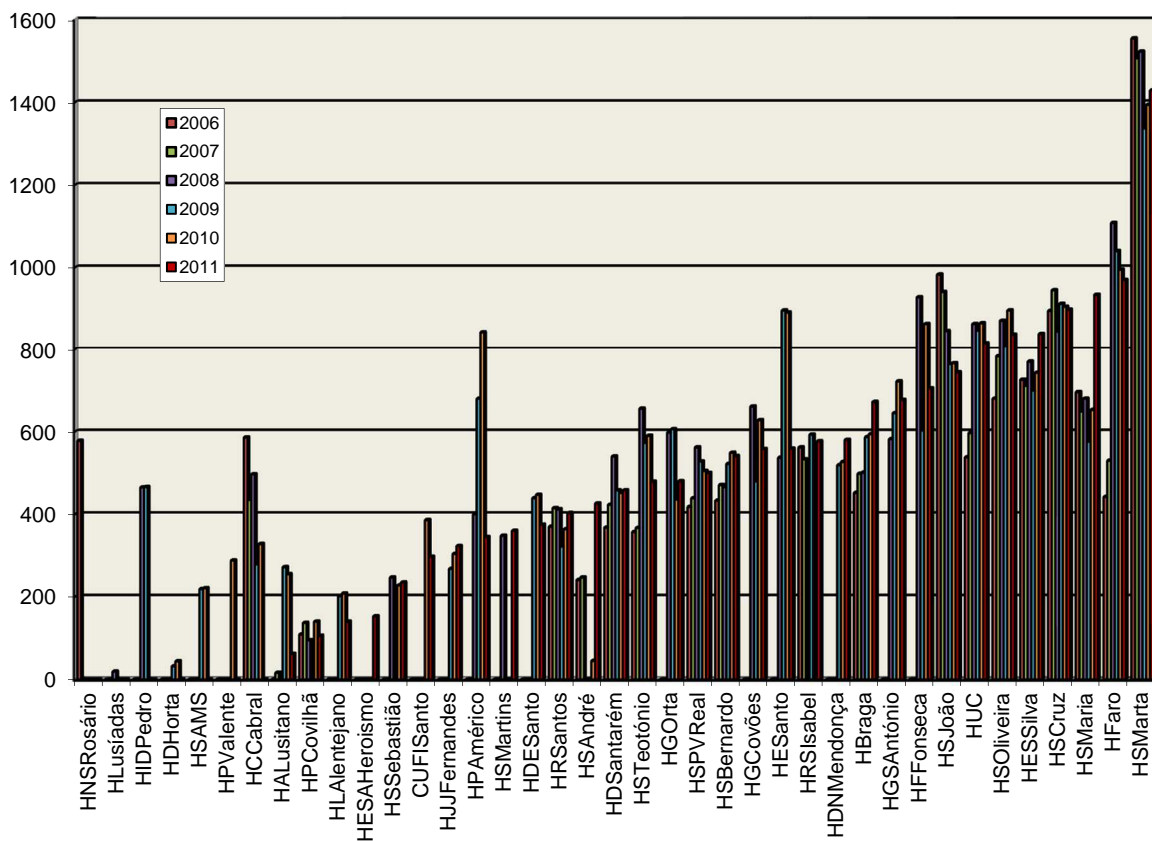


Doentes Admitidos na Unidade Coronária	2006	2007	2008	2009	2010	2011
HSMarta-CHLC	1555	1507	1523	1337	1394	1429
HFaro	442	530	1108	1040	995	970
HSMaria-CHLN	696	649	680	576	653	934
HSCruz-CHLO	895	945	845	912	905	898
HESSilva-CHVNGE	726	711	770	700	743	839
HSOliveira-CHAA	680	783	871	807	896	837
HUC-CHUC	538	597	863	847	865	816
HSJoão-CHSJ	983	941	846	764	766	744
HFFonseca	—	—	928	603	863	705
HGSAntónio-CHP	—	—	582	645	722	677
HBraga	452	498	501	587	594	672
HDNMendonça-SESARAM	—	—	—	519	527	580
HRSIsabel-CHMT	562	533	—	593	—	577
HESanto	—	—	537	896	891	559
HGCovões-CHUC	—	—	661	480	628	558
HSBernardo-CHS	433	471	466	522	549	541
HSPVReal-CHTMAD	418	439	562	528	505	500
HGOorta	—	—	598	606	436	480
HSTeotónio-CHTV	357	367	656	573	590	479
HDSantarém	368	423	540	458	452	458

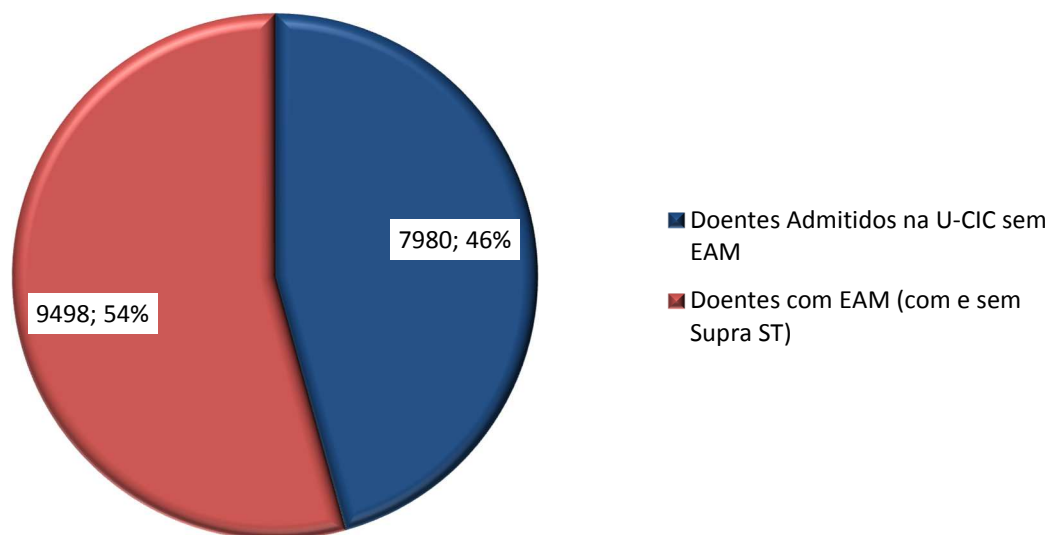


Doentes Admitidos na Unidade Coronária	2006	2007	2008	2009	2010	2011
HSAndré-CHLP	241	247	—	—	45	426
HRSantos	370	415	412	322	364	403
HDESanto	—	—	—	439	447	375
HSMartins-ULSG	—	—	348	—	—	360
HPAmérico-CHTS	—	—	400	680	843	345
HJJFernandes-ULSBA	—	—	—	268	304	323
CUFISanto	—	—	—	—	386	297
HSSebastião-CHEDV	—	—	247	—	228	235
HESAHeroismo	—	—	—	—	—	153
HLAlentejano	—	—	—	202	208	140
HPCovilhã-CHCB	109	137	95	—	140	106
HALusitano-ULSCB	—	16	—	272	255	62
HCCabral-CHLC	586	435	497	279	328	—
HPValente-CHLN	—	—	—	—	288	—
HSAMS	—	—	—	219	221	—
HDHorta	—	—	—	32	44	—
HIDPedro-CHBV	—	—	465	466	—	—
HLusíadas	—	—	19	—	—	—
HNSRosário-CHBM	578	—	—	—	—	—

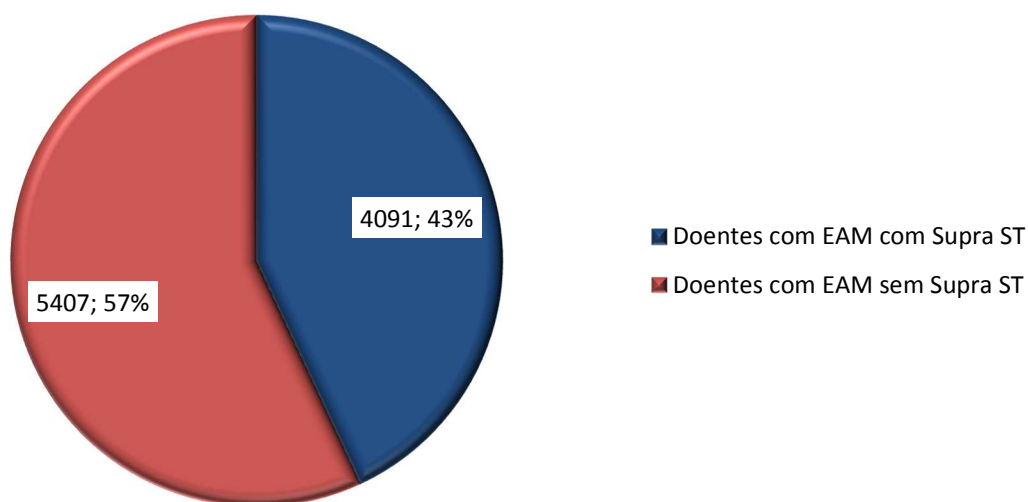
Doentes Admitidos na Unidade Coronária



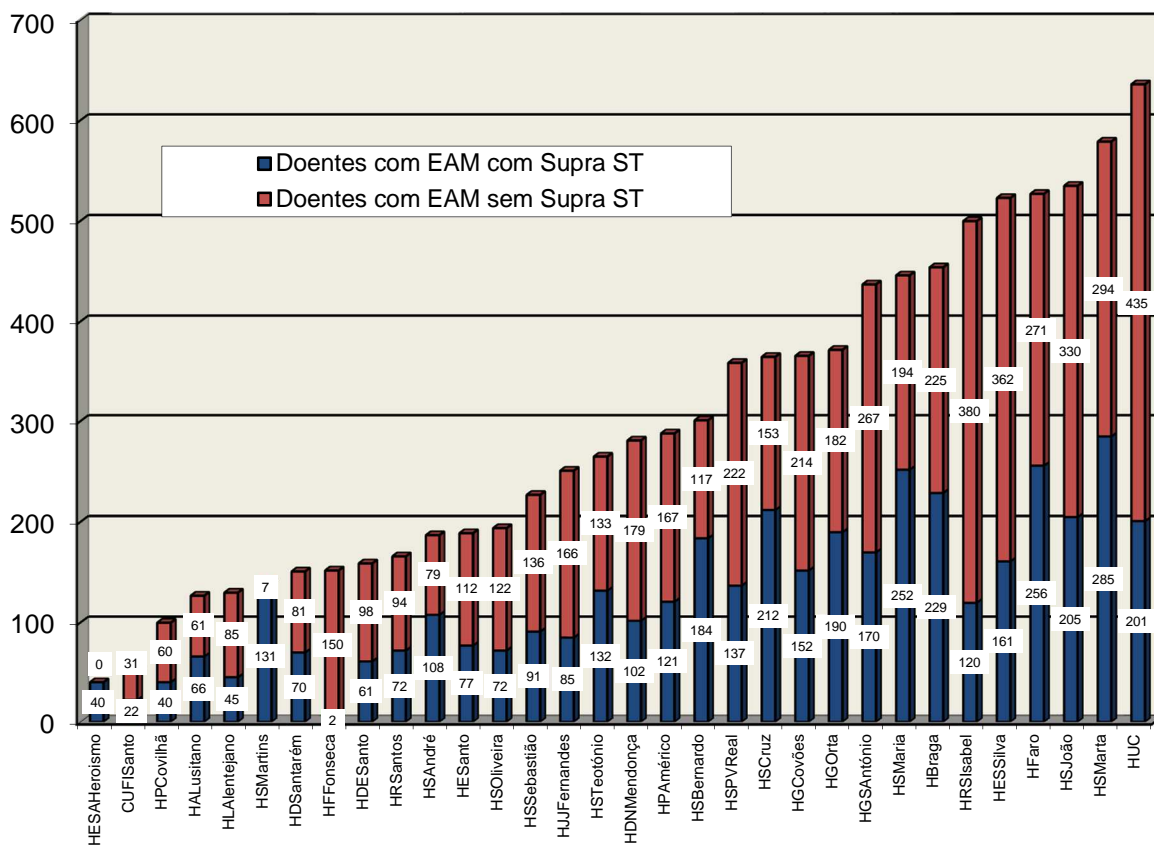
Admissões por Enfarte de Miocárdio nas Unidades Coronárias n=17478



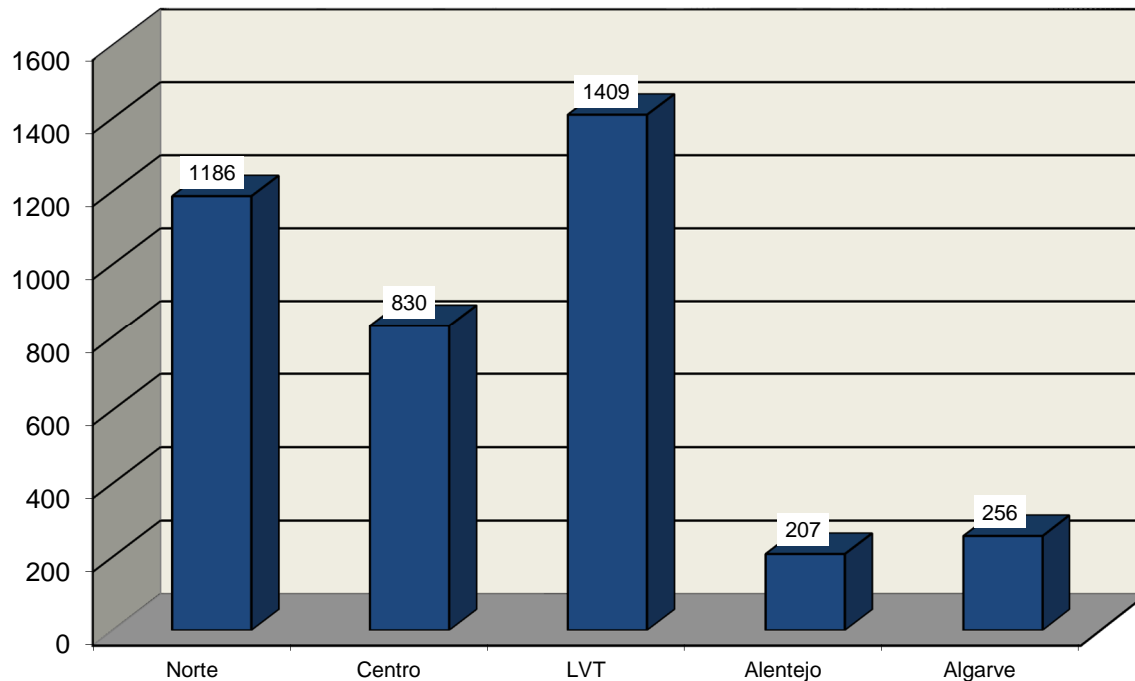
Admissões na Unidade Coronária por Tipo de Enfarte



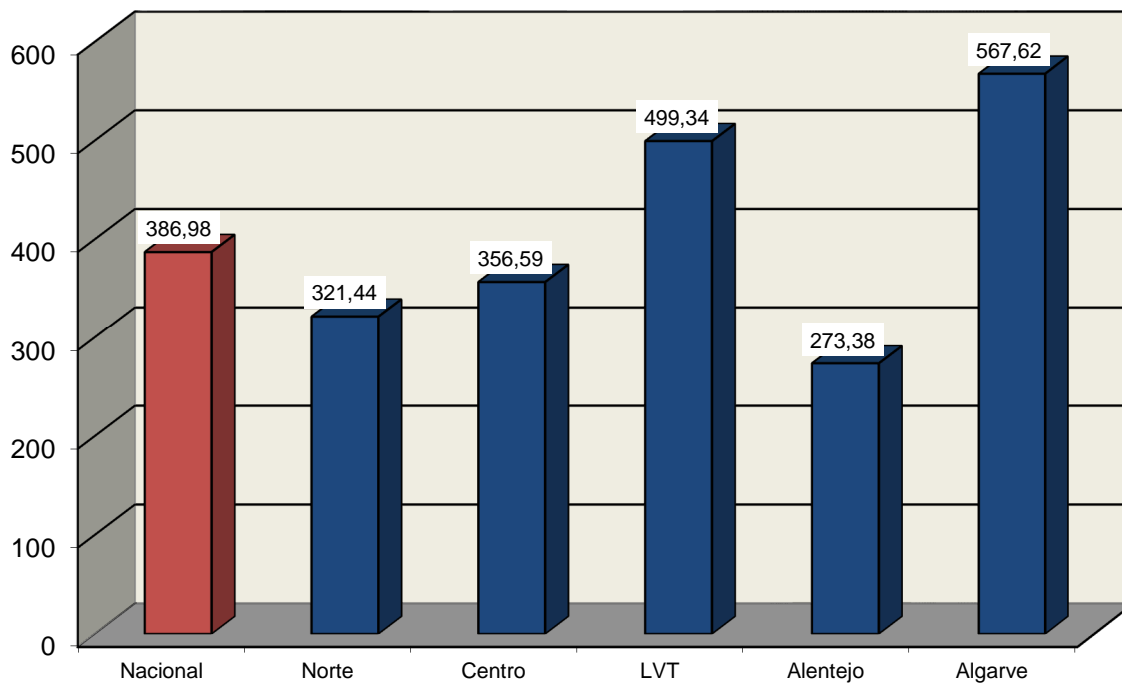
Doentes com EAM com Supra ST vs sem Supra ST (2011)



Doentes com EAM com Supra ST (2011)



Doentes com EAM com Supra ST por Milhão Habitante (2011)

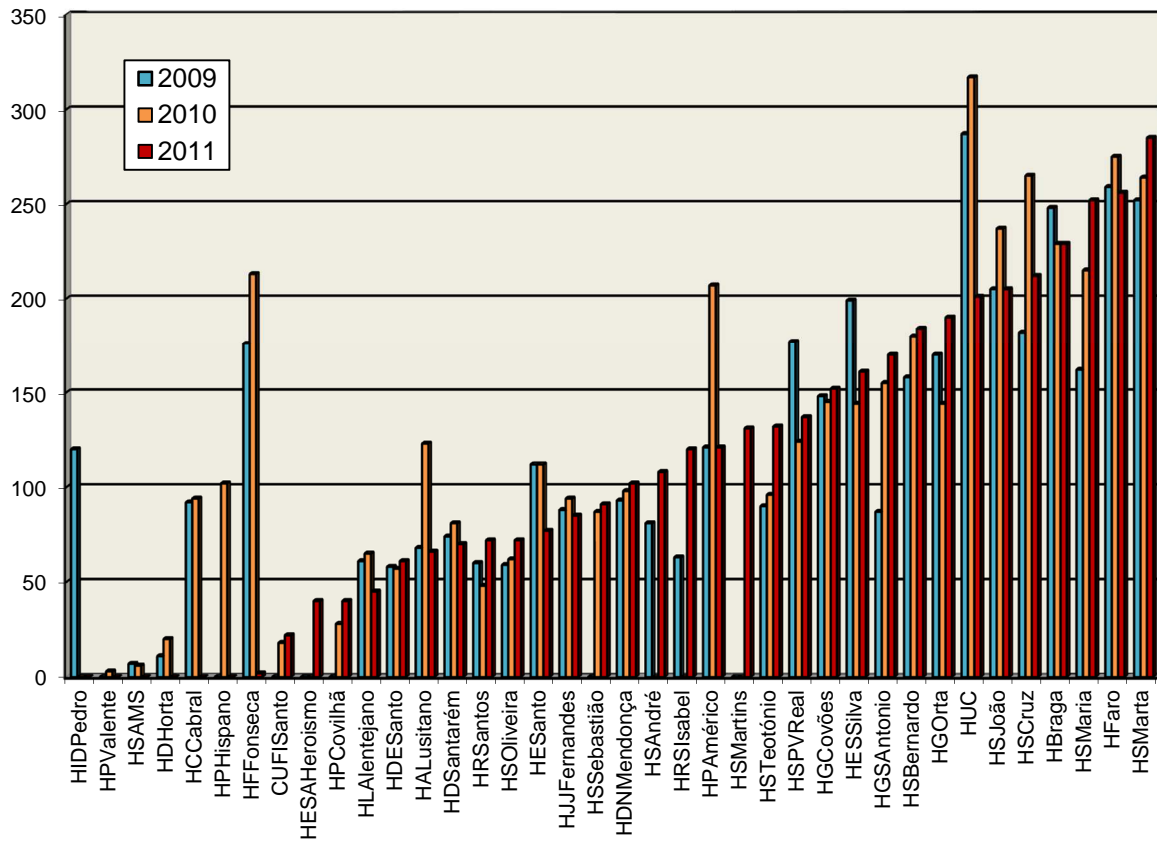




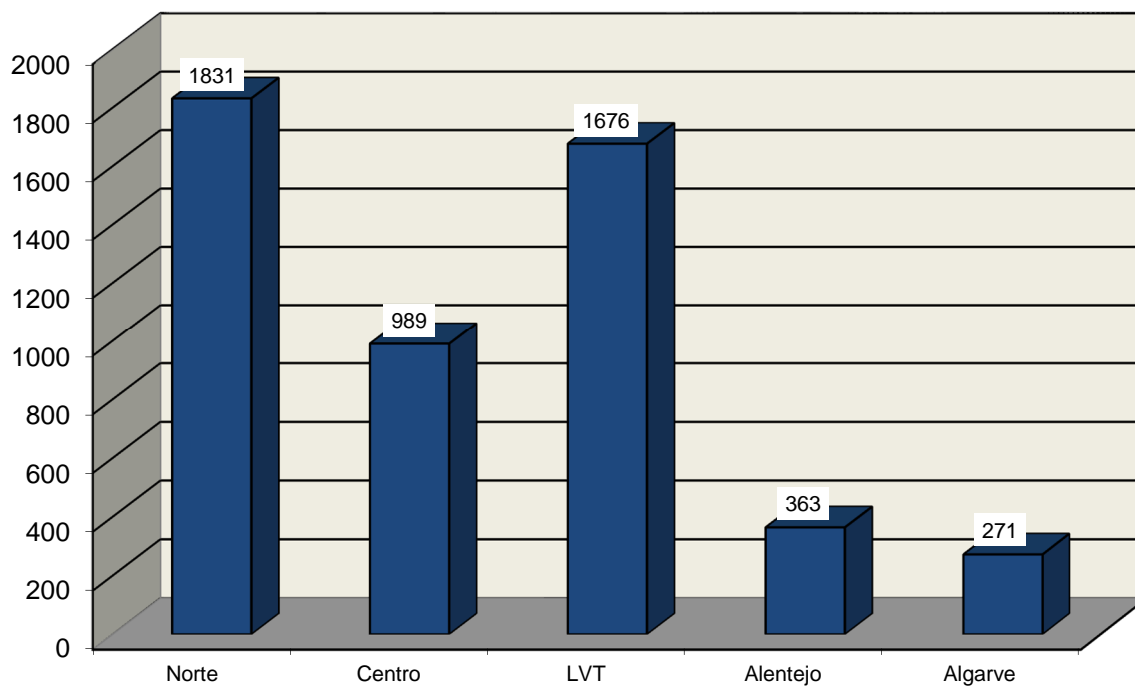
Doentes com EAM com Supra ST	2009	2010	2011
HSMarta-CHLC	252	264	285
HFaro	259	275	256
HSMaria-CHLN	162	215	252
HBraga	248	229	229
HSCruz-CHLO	182	265	212
HSJoão-CHSJ	205	237	205
HUC-CHUC	287	317	201
HGOorta	170	144	190
HSBernardo-CHS	158	180	184
HGSAntónio-CHP	87	155	170
HESSilva-CHVNGE	199	144	161
HGCovões-CHUC	148	145	152
HSPVReal-CHTMAD	177	124	137
HSTeotónio-CHTV	90	96	132
HSMartins-ULSG	—	—	131
HPAmérico-CHTS	121	207	121
HRSIsabel-CHMT	63	—	120
HSAndré-CHLP	81	—	108
HDNMendonça-SESARAM	93	98	102
HSSebastião-CHEDV	—	87	91
HJIFernandes-ULSBA	88	94	85
HEsanto	112	112	77
HSOliveira-CHAA	59	62	72
HRsantos	60	48	72
HDSantarém	74	81	70
HALusitano-ULSCB	68	123	66
HDESanto	58	57	61
HLAlentejano	61	65	45
HPCovilhã-CHCB	—	28	40
HESAHeroísmo	—	—	40
CUFISanto	—	18	22
HFFonseca	176	213	2
HPHispano-ULSM	—	102	—
HCCabral-CHLC	92	94	—
HDHorta	11	20	—
HSAMS	7	6	—
HPValente-CHLN	—	3	—
HIDPedro-CHBV	120	—	—



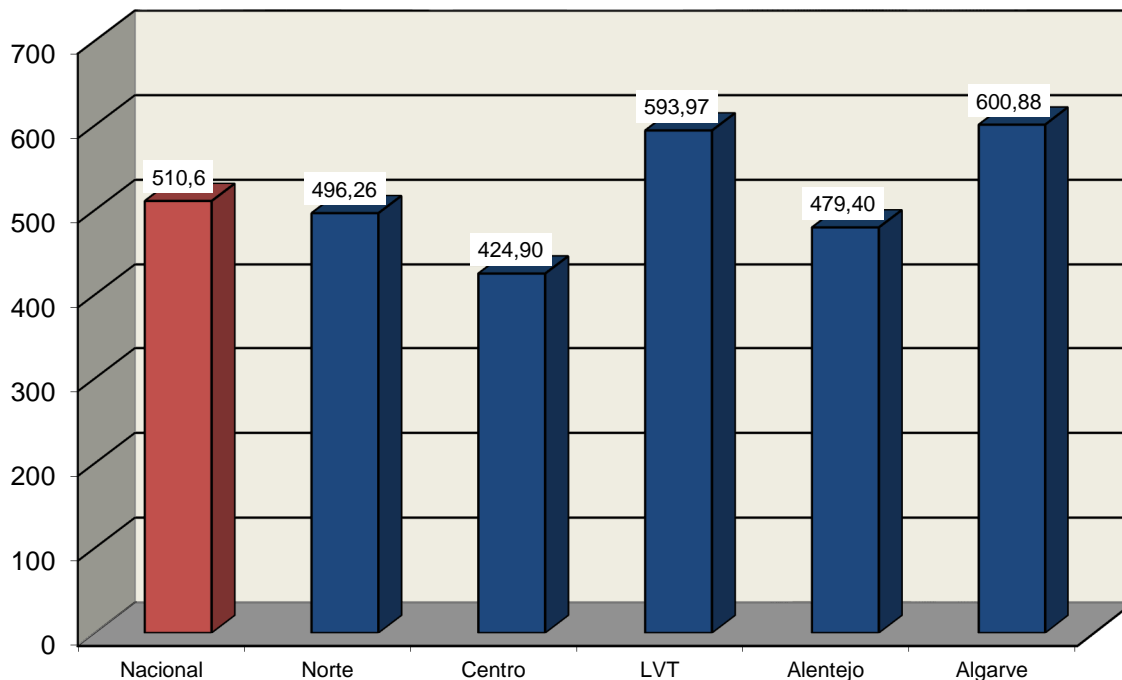
Doentes com EAM com Supra ST



Doentes com EAM sem Supra ST (2011)



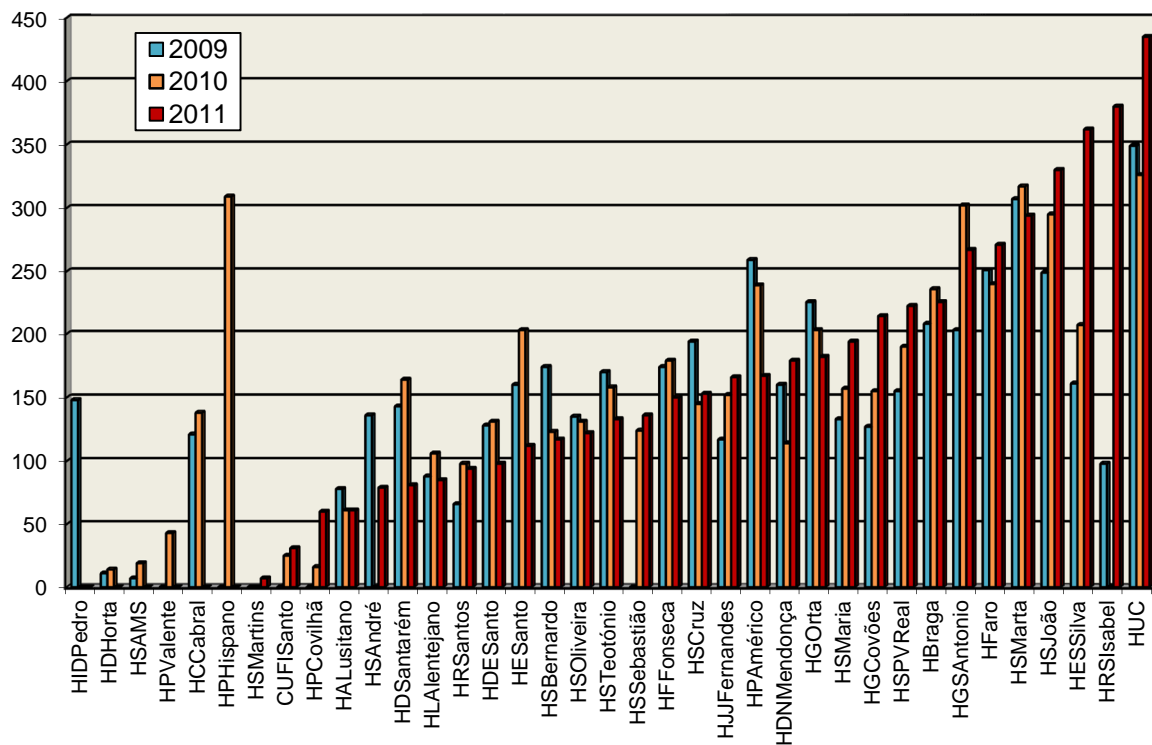
Doentes com EAM sem Supra ST por Milhão Habitante (2011)





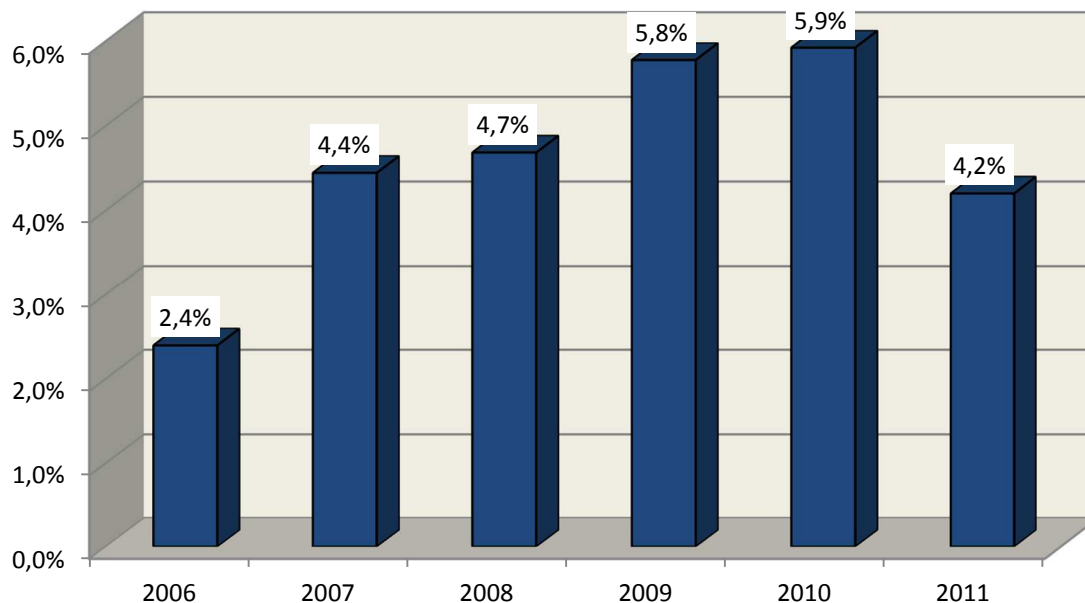
Doentes com EAM sem Supra ST	2009	2010	2011
HUC-CHUC	349	326	435
HRSIsabel-CHMT	98	—	380
HESilva-CHVNGE	161	207	362
HSJoão-CHSJ	249	295	330
HSMarta-CHLC	307	317	294
HFaro	251	240	271
HGSAntónio-CHP	203	302	267
HBraga	208	236	225
HSPVReal-CHTMAD	155	190	222
HGCovões-CHUC	127	155	214
HSMaria-CHLN	133	157	194
HGOorta	225	203	182
HDNMendonça-SESARAM	160	114	179
HPAmérico-CHTS	259	239	167
HJJFernandes-ULSBA	117	152	166
HSCruz-CHLO	194	145	153
HFFonseca	174	179	150
HSSebastião-CHEDV	—	124	136
HSTeotónio-CHTV	170	158	133
HSOliveira-CHAA	135	131	122
HSBernardo-CHS	174	123	117
HESanto	160	203	112
HDESanto	128	131	98
HRSantos	66	98	94
HLAlentejano	88	106	85
HDSantarém	143	164	81
HSAndré-CHLP	136	—	79
HALusitano-ULSCB	78	61	61
HPCovilhã-CHCB	—	16	60
CUFISanto	—	25	31
HSMartins-ULSG	—	—	7
HPHispano-ULSM	—	309	—
HCCabral-CHLC	121	138	—
HPValente-CHLN	—	43	—
HSAMS	7	19	—
HDHorta	11	14	—
HIDPedro-CHBV	148	—	—
HSLVCastelo-CHAM	—	—	—
HCUFDescobertas	—	—	—
HNSRosário-CHBM	—	—	—
HLusíadas	—	—	—
HESAHeroismo	—	—	—

Doentes com EAM sem Supra ST

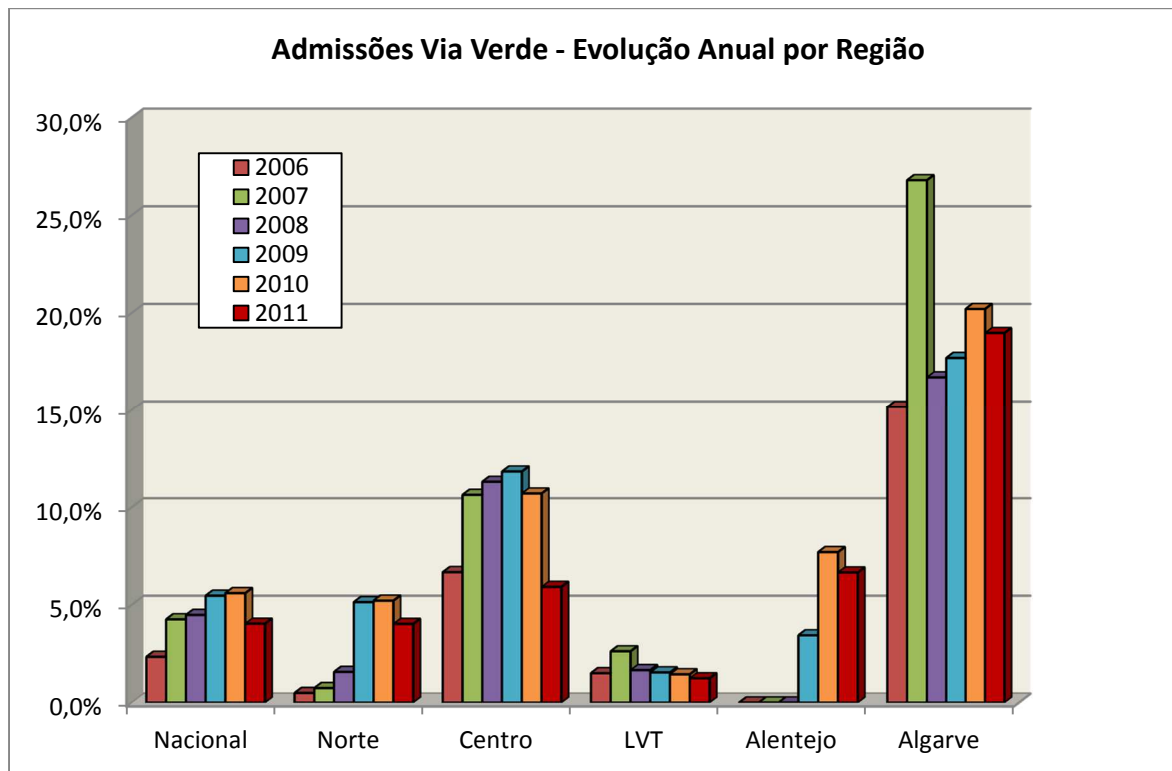


ADMISSÕES NAS UNIDADES CORONÁRIAS

Evolução da Percentagem do Número Total de Admissões pela Via Verde



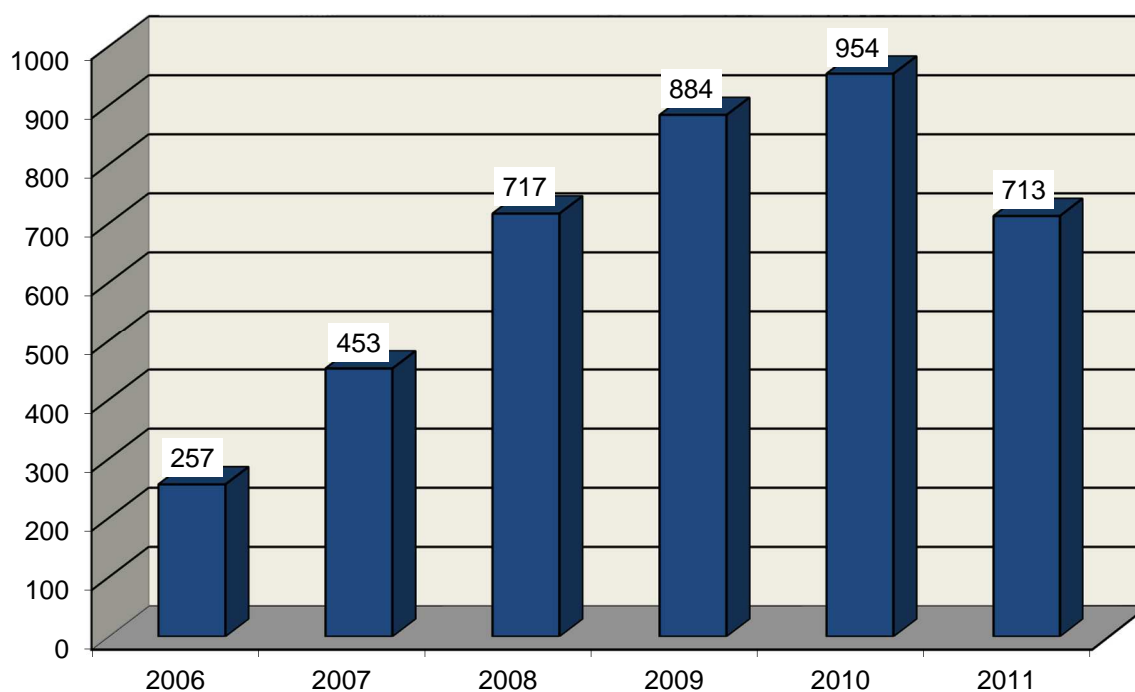
Admissões Via Verde - Evolução Anual por Região



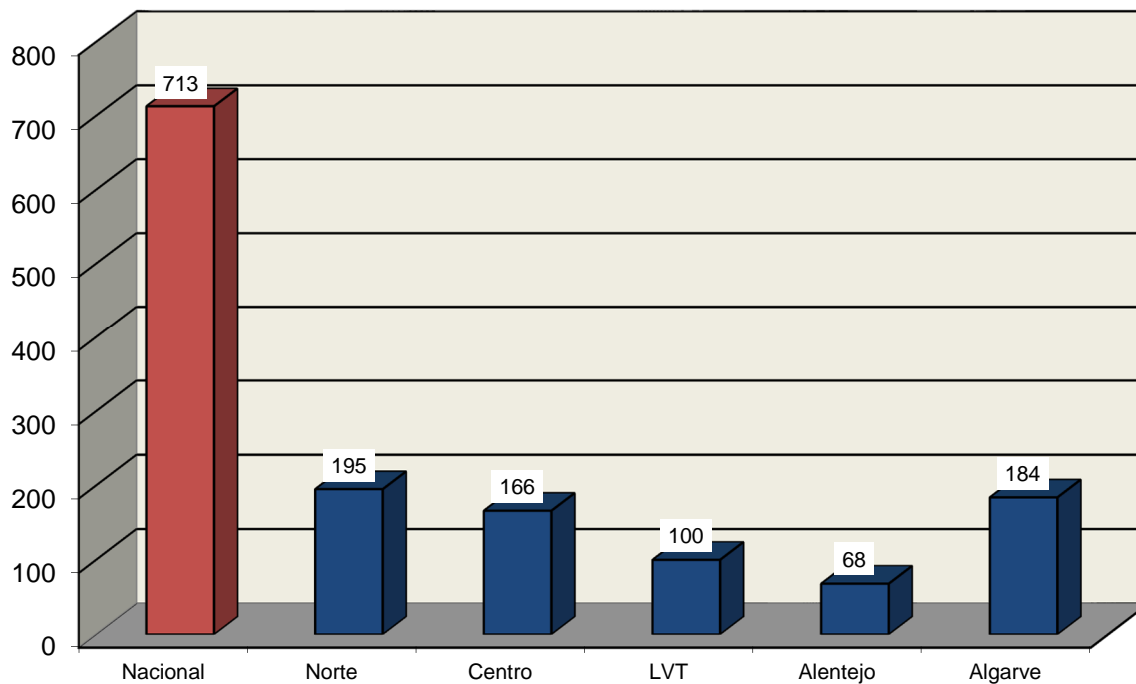


	2006	2007	2008	2009	2010	2011
Nacional	2,3%	4,3%	4,5%	5,5%	5,6%	4,0%
Norte	0,5%	0,7%	1,6%	5,1%	5,2%	4,0%
Centro	6,7%	10,6%	11,3%	11,8%	10,7%	5,9%
LVT	1,5%	2,6%	1,7%	1,5%	1,4%	1,2%
Alentejo	—	—	—	3,4%	7,7%	6,7%
Algarve	15,2%	26,8%	16,7%	17,7%	20,2%	19,0%

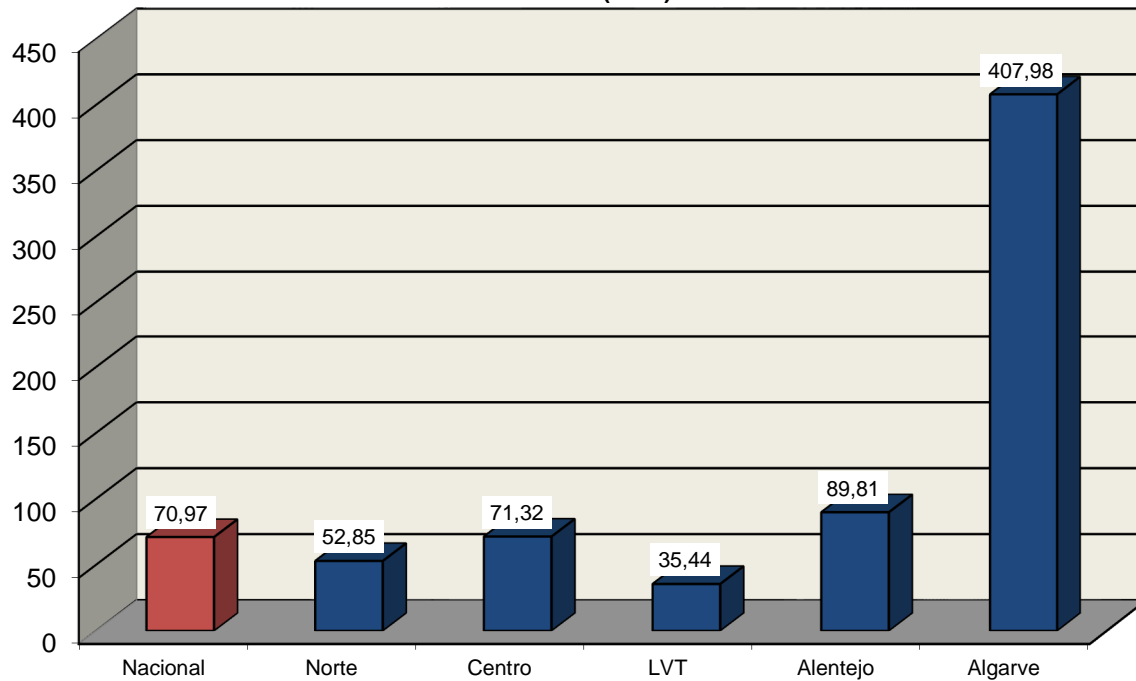
Doentes Admitidos na Unidade Coronária pela Via Verde (INEM)



Doentes Admitidos na Unidade Coronária pela Via Verde (INEM) (2011)

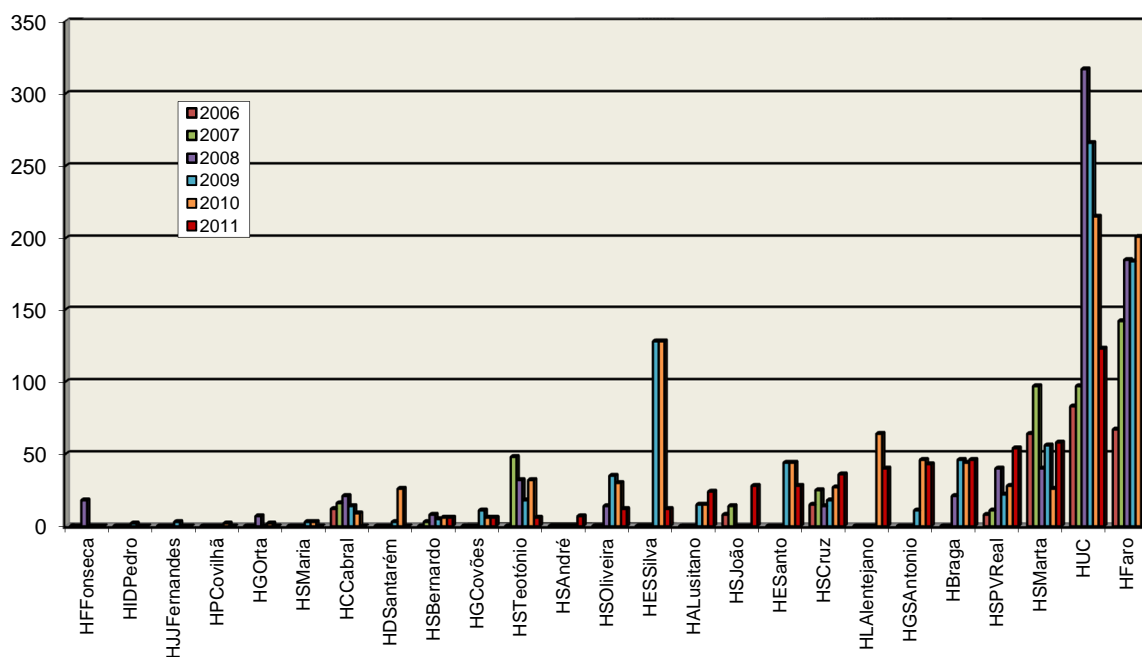


Doentes Admitidos na Unidade Coronária pela Via Verde (INEM) por Milhão Habitante (2011)



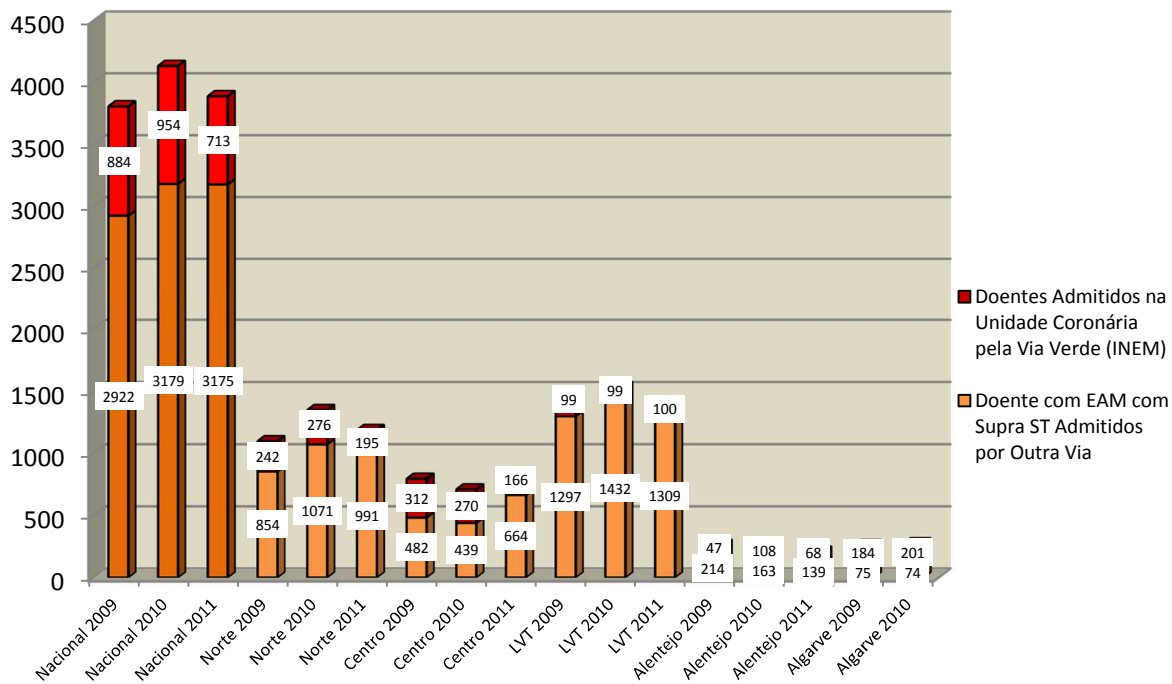
Doentes Admitidos na Unidade Coronária pela Via Verde (INEM)	2006	2007	2008	2009	2010	2011
HFaro	67	142	185	184	201	184
HUC-CHUC	83	97	317	266	215	123
HSMarta-CHLC	64	97	40	56	26	58
HSPVReal-CHTMAD	8	11	40	22	28	54
HBraga	—	—	21	46	44	46
HGSAntónio-CHP	—	—	—	11	46	43
HLAlentejano	—	—	—	—	64	40
HSCruz-CHLO	15	25	14	18	27	36
HESanto	—	—	—	44	44	28
HSJoão-CHSJ	8	14	—	—	—	28
HALusitano-ULSCB	—	—	—	15	15	24
HESilva-CHVNGE	—	—	—	128	128	12
HSOliveira-CHAA	—	—	14	35	30	12
HSAndré-CHLP	—	—	—	—	—	7
HSTeotónio-CHTV	—	48	32	18	32	6
HGCovões-CHUC	—	—	—	11	6	6
HSBernardo-CHS	—	3	8	5	6	6
HDSantarém	—	—	—	3	26	—
HCCabral-CHLC	12	16	21	14	9	—
HSMaria-CHLN	—	—	—	3	3	—
HGOorta	—	—	7	—	2	—
HPCovilhã-CHCB	—	—	—	—	2	—
HJJFernandes-ULSBA	—	—	—	3	—	—
HIDPedro-CHBV	—	—	—	2	—	—
HFFonseca	—	—	18	—	—	—

Doentes Admitidos na Unidade Coronária pela Via Verde (INEM)



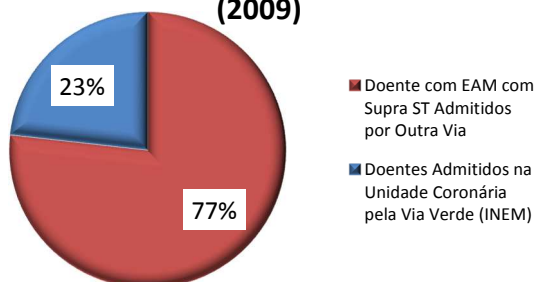
ENFARTE AGUDO DO MIOCÁRDIO COM SUPRA DESNIVELAMENTO DO SEGMENTO ST

Vias de Acesso dos Doente com EAM com Supra ST

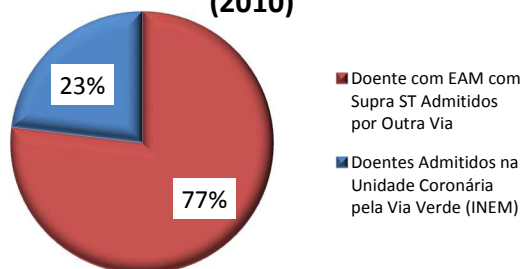




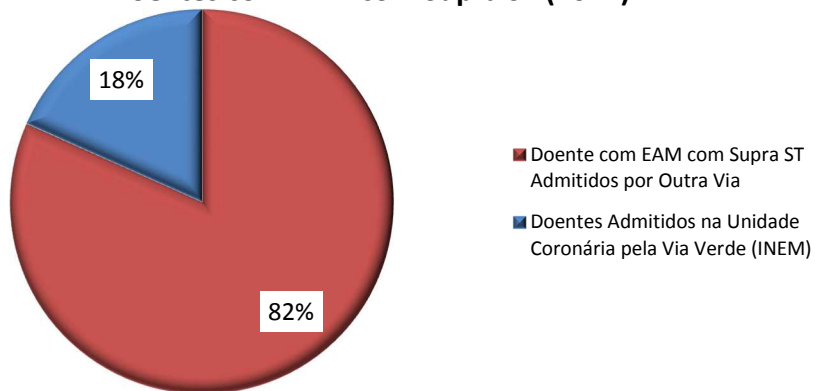
**Doentes com EAM com Supra ST
(2009)**



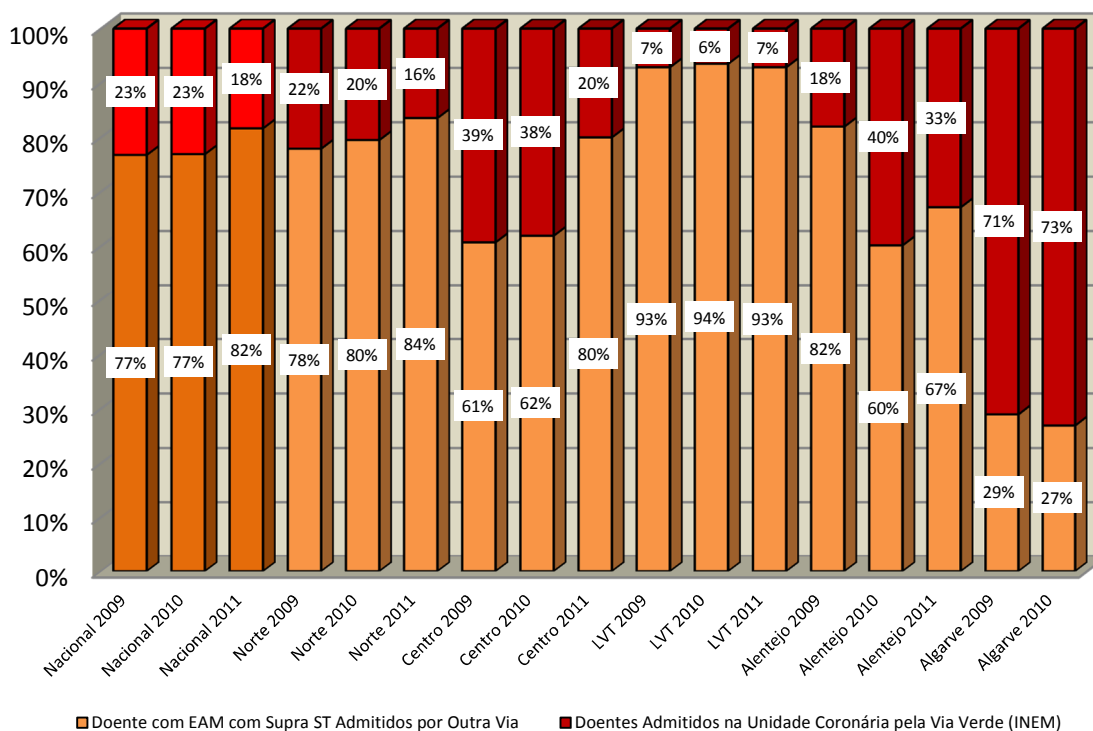
**Doentes com EAM com Supra ST
(2010)**



Doentes com EAM com Supra ST (2011)

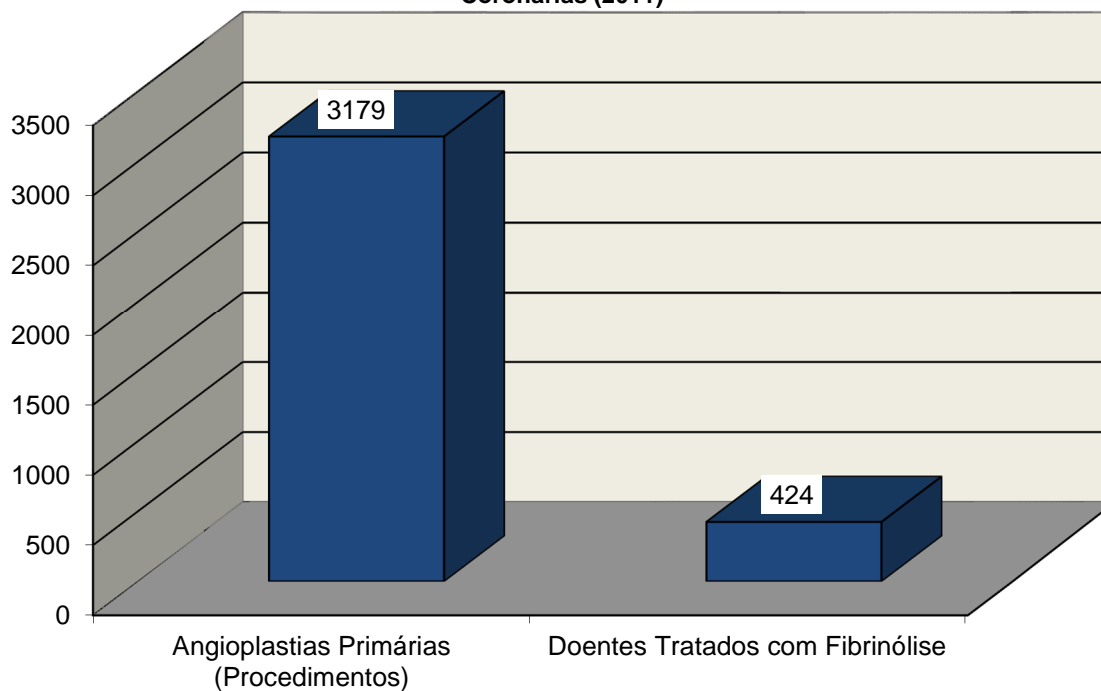


Vias de Acesso dos Doentes com EAM com Supra ST

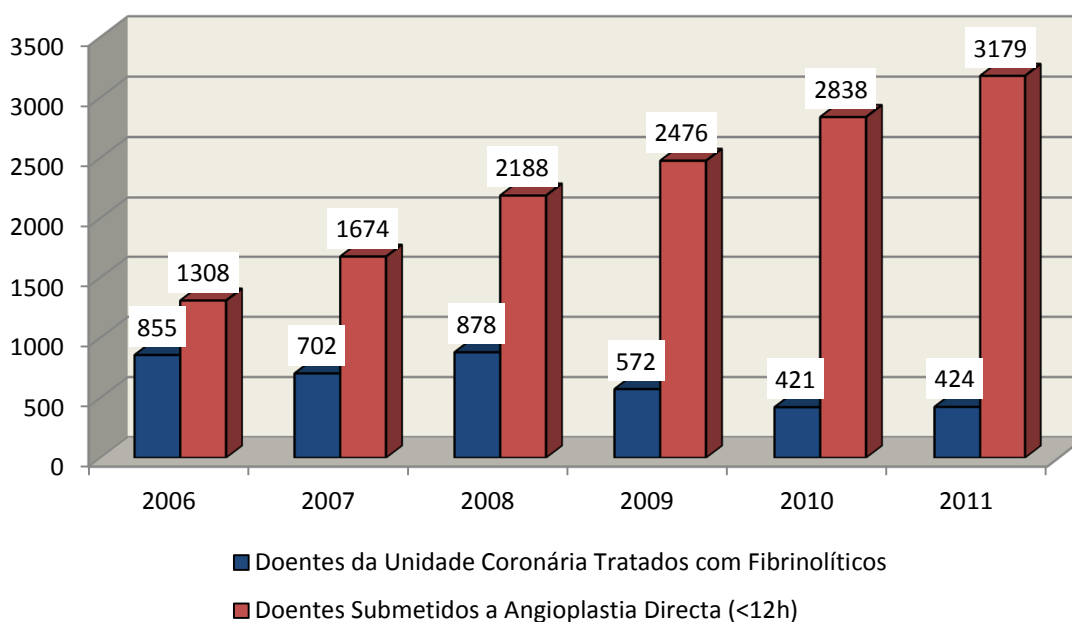


TERAPÊUTICAS DE REPERFUSÃO NO ENFARTE AGUDO DO MIOCÁRDIO

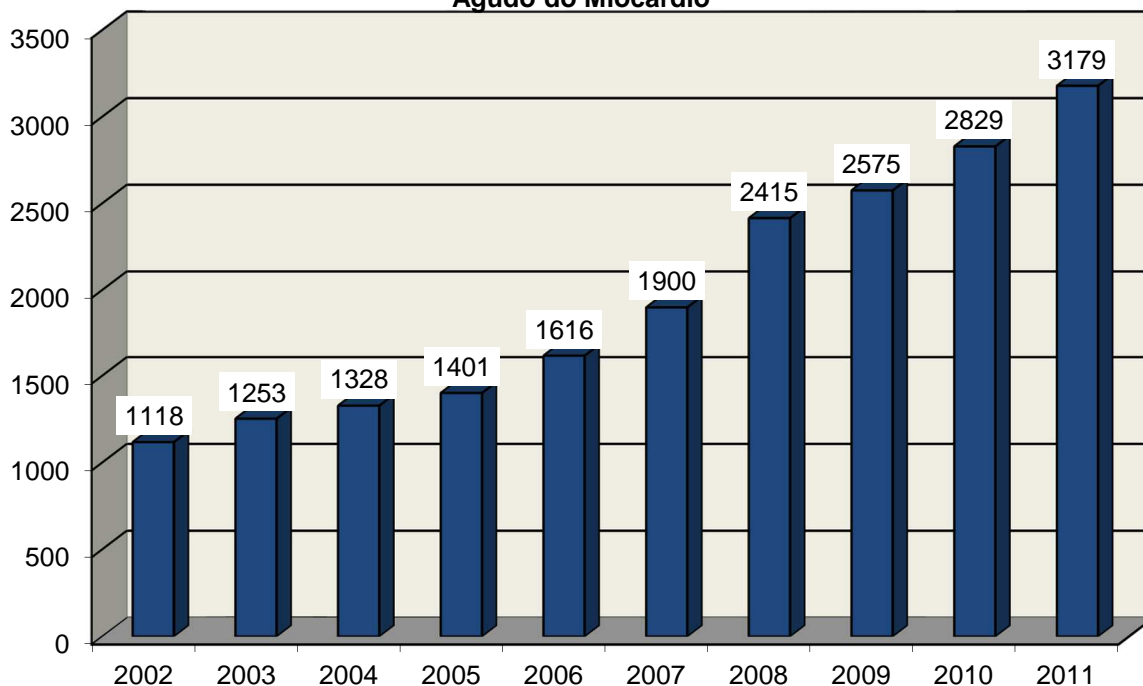
Terapêuticas de Reperusão (Angioplastia Primária vs Fibrinólise) nas Unidades Coronárias (2011)



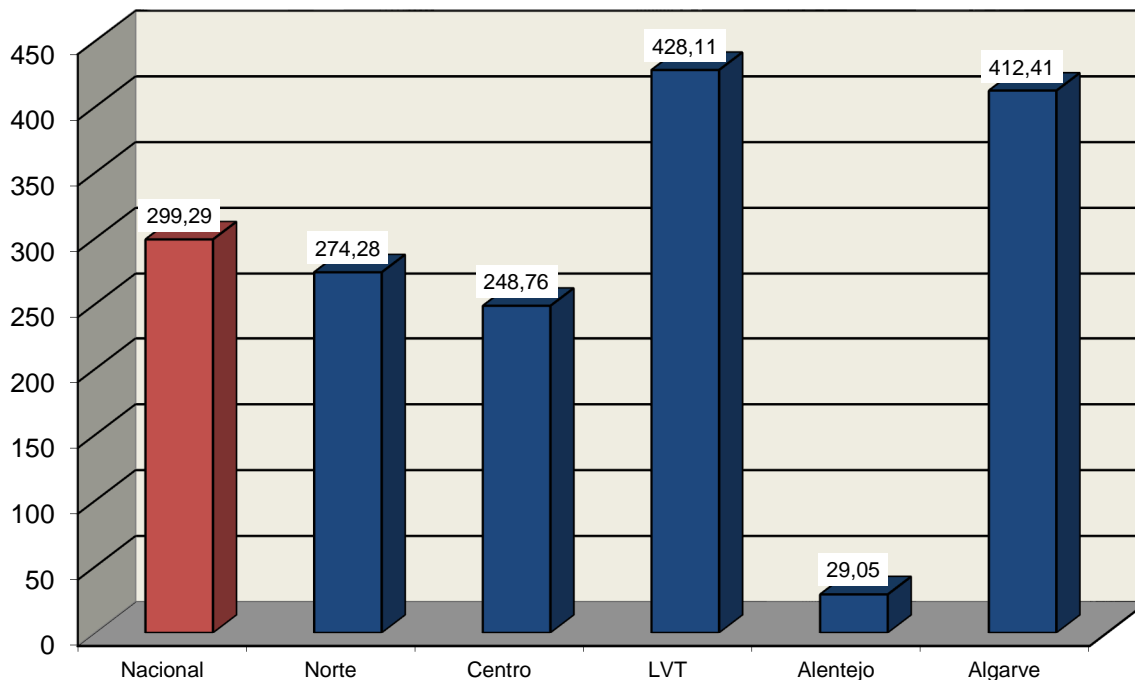
Terapêuticas de Reperusão (Angioplastia Primária vs Fibrinólise) nas Unidades Coronárias - Evolução Anual



Doentes Submetidos a Angioplastia Primária (ICP Primária) no Enfarte Agudo do Miocárdio



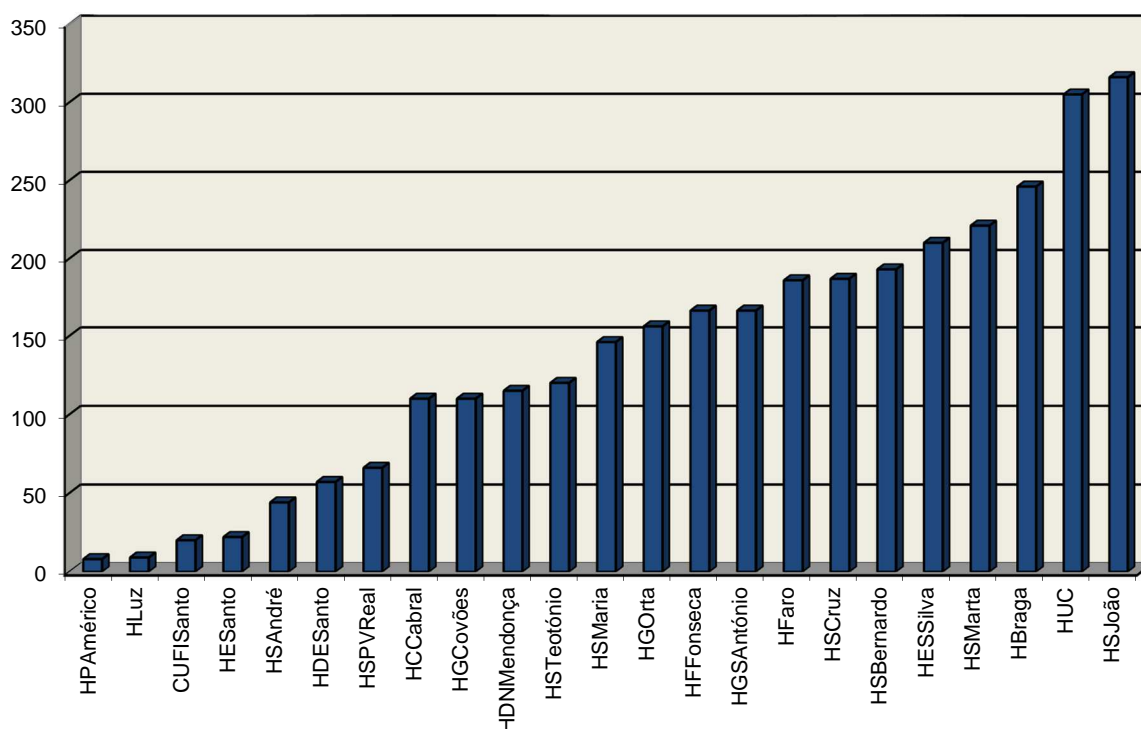
Doentes submetidos a ICP Primária por Milhão Habitante (2009)



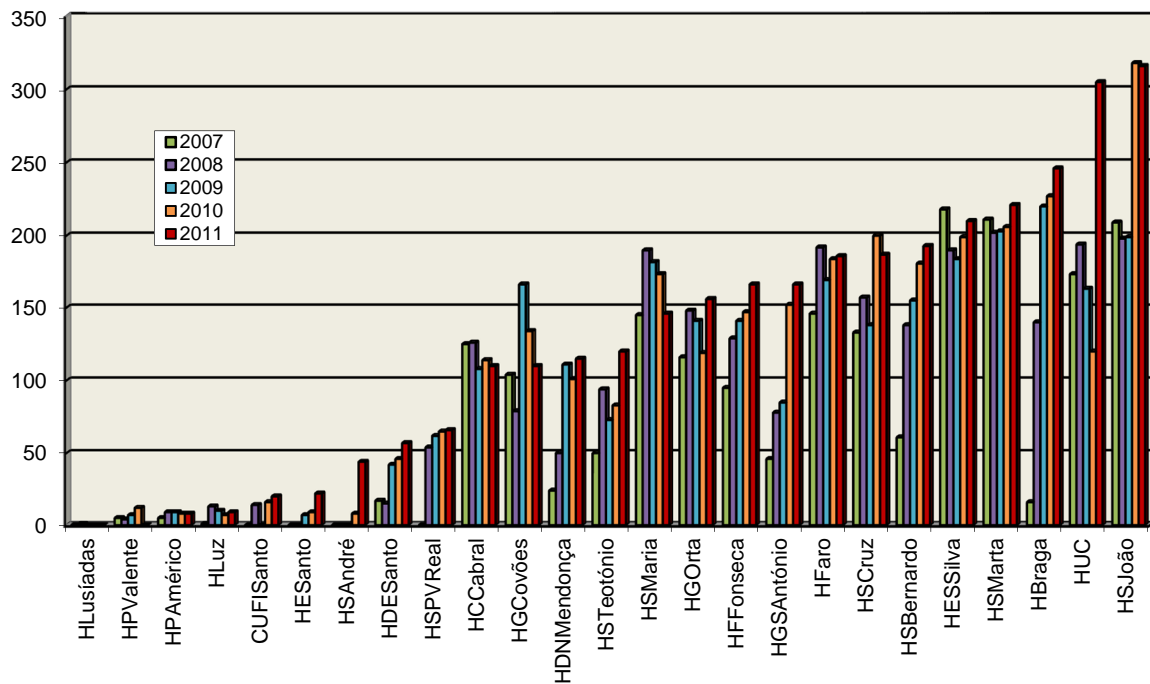


Angioplastias Primárias (Doentes)	2007	2008	2009	2010	2011
HSJoão-CHSJ	209	198	199	318	316
HUC-CHUC	173	194	163	120	305
HBraga	16	140	220	227	246
HSMarta-CHLC	211	202	203	206	221
HESSilva-CHVNGE	218	190	184	199	210
HSBernardo-CHS	61	138	155	181	193
HSCruz-CHLO	133	157	138	200	187
HFaro	146	192	169	184	186
HGSAntónio-CHP	46	78	85	152	166
HFFonseca	95	129	141	147	166
HGOorta	116	148	141	119	156
HSMaria-CHLN	145	190	182	173	146
HSTeotónio-CHTV	50	94	73	83	120
HDNMendonça-SESARAM	24	50	111	101	115
HGCovões-CHUC	104	79	166	134	110
HCCabral-CHLC	125	126	108	114	110
HSPVReal-CHTMAD	—	54	62	65	66
HDESanto	17	15	42	46	57
HSAndré-CHLP	—	—	—	8	44
HESanto	—	—	7	9	22
CUFISanto	—	14	—	16	20
HLuz	1	13	10	7	9
HPAmérico-CHTS	5	9	9	8	8
HPValente-CHLN	5	4	7	12	—
HLusíadas	—	1	—	—	—

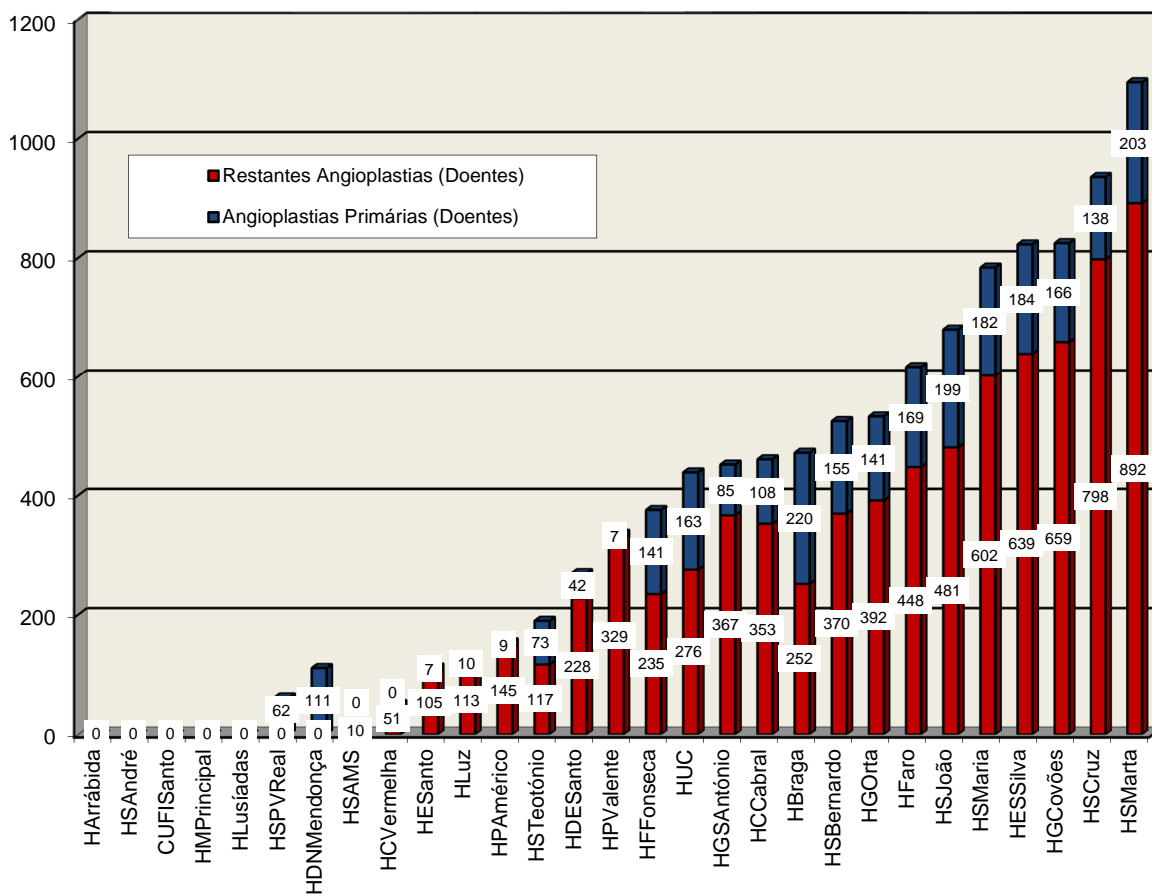
Angioplastias Primárias (Doentes) por Instituição (2011)



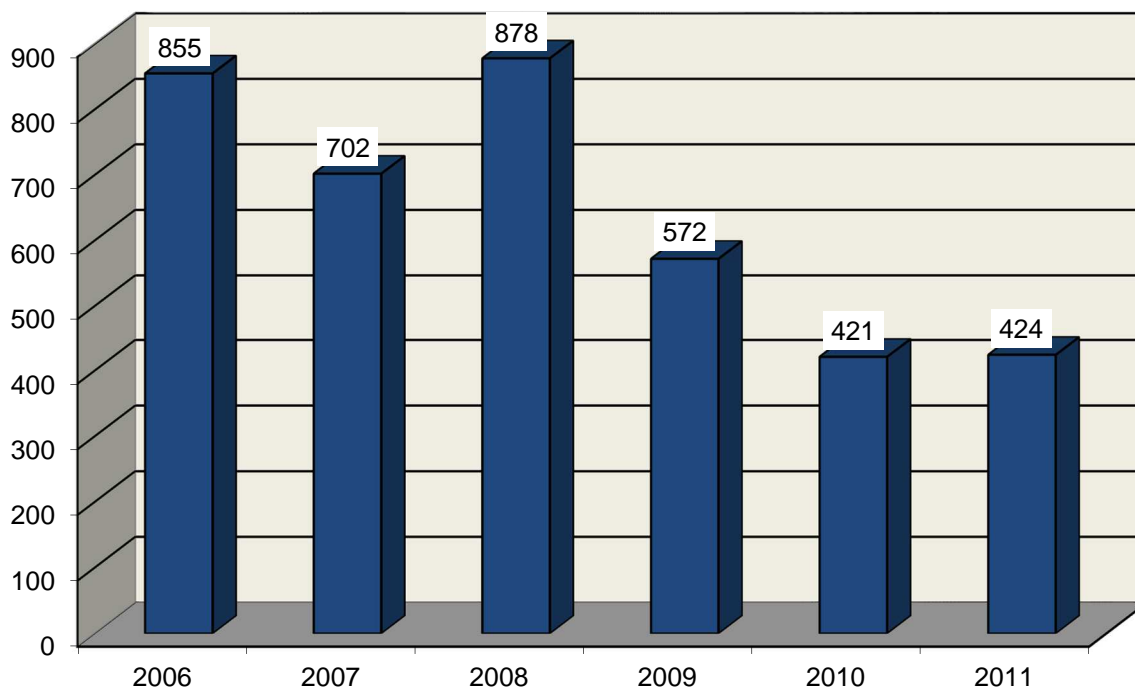
Angioplastias Primárias (Doentes) por Instituição



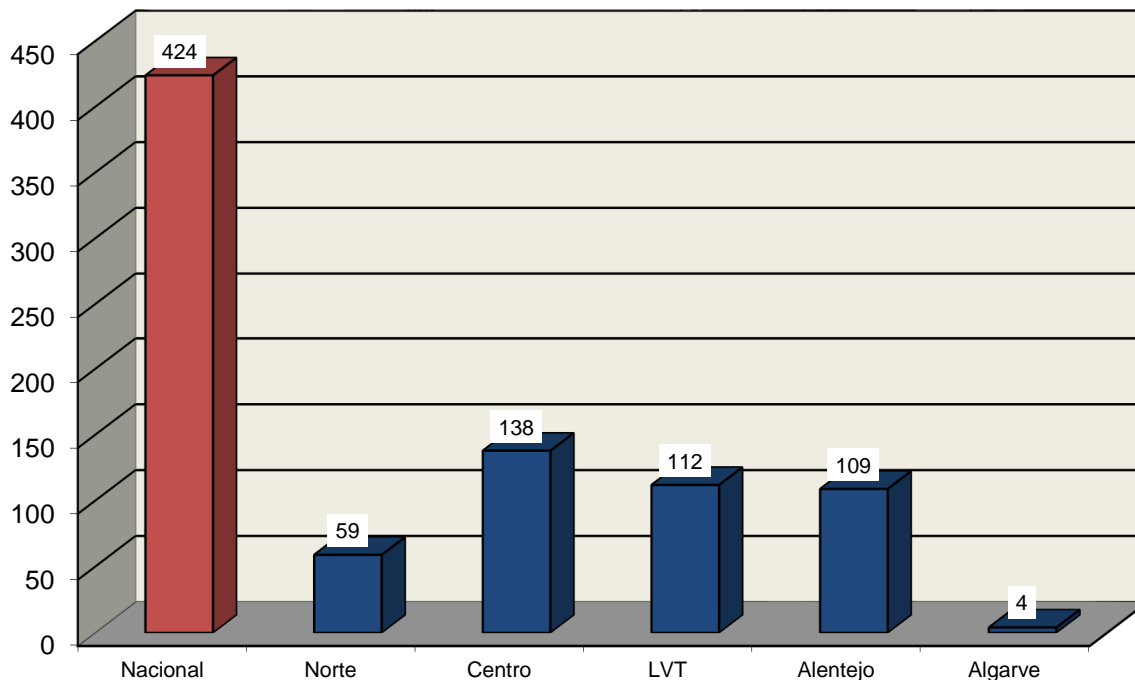
Angioplastias Primárias vs Restantes Angioplastias 2011 (Doentes)



Doentes da Unidade Coronária Tratados com Fibrinolíticos

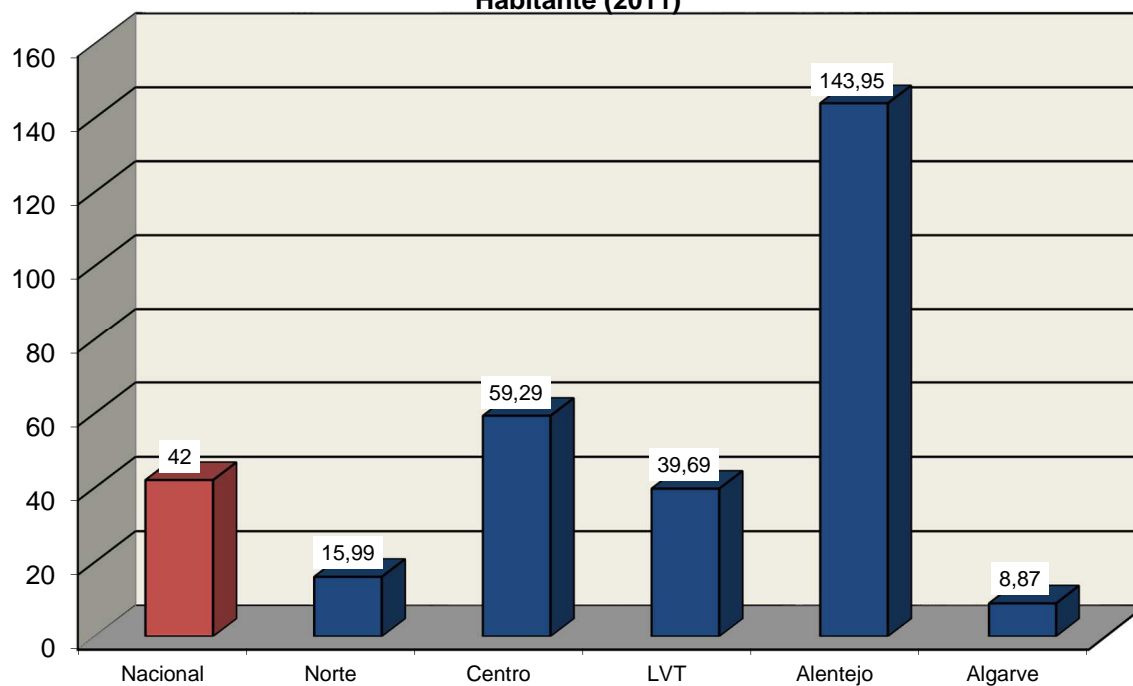


Doentes da Unidade Coronária Tratados com Fibrinolíticos (2011)





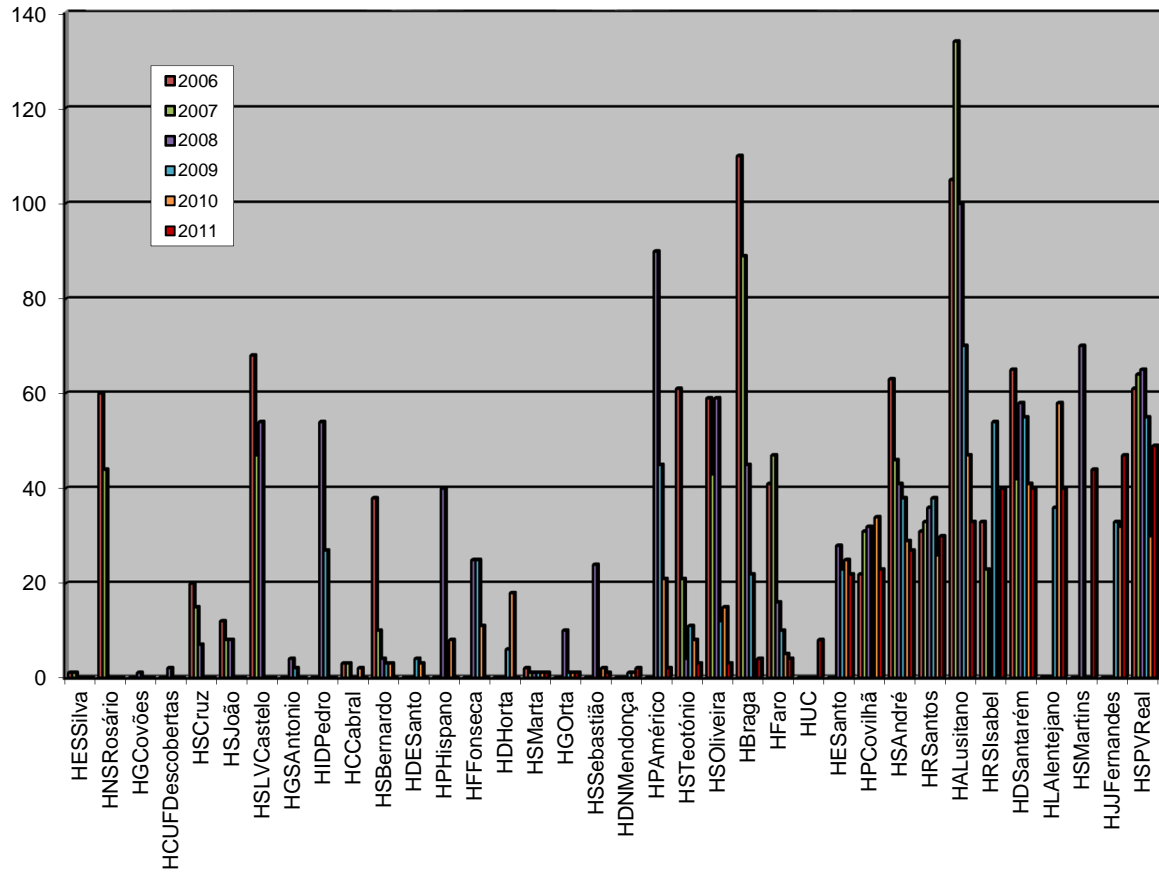
**Doentes da Unidade Coronária Tratados com Fibrinolíticos por Milhão
Habitação (2011)**





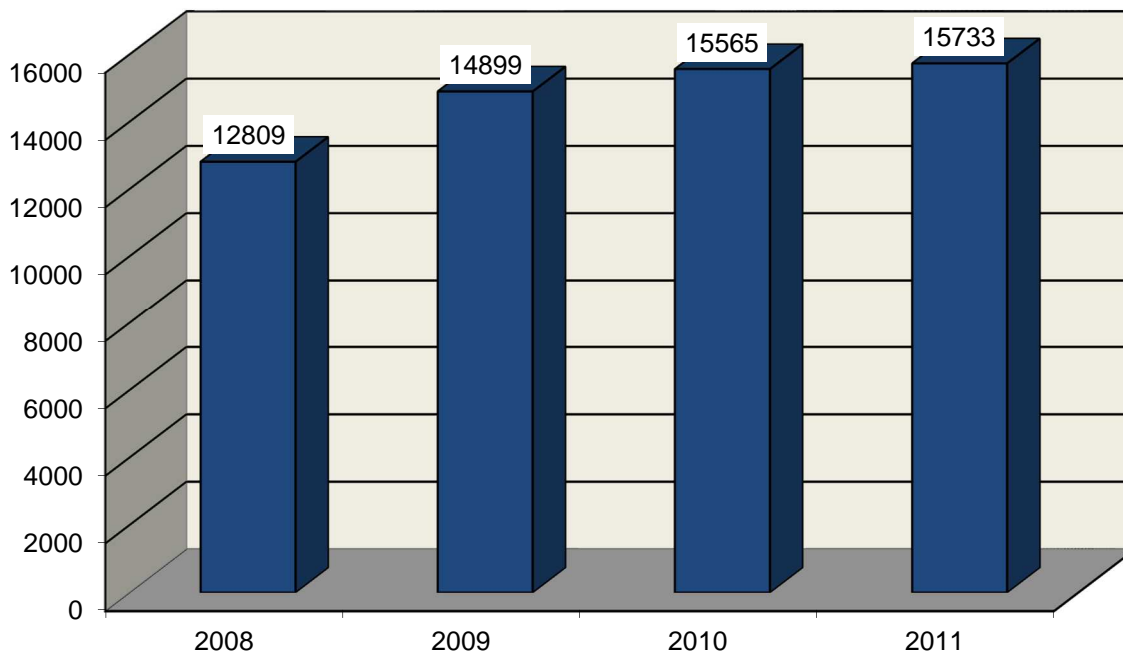
Doentes da Unidade Coronária Tratados com Fibrinolíticos	2006	2007	2008	2009	2010	2011
HSPVReal-CHTMAD	61	64	65	55	30	49
HJFernandes-ULSBA	—	—	—	33	32	47
HSMartins-ULSG	—	—	70	—	—	44
HLAlentejano	—	—	—	36	58	40
HDSantarém	65	42	58	55	41	40
HRSIsabel-CHMT	33	23	—	54	—	40
HALusitano-ULSCB	105	134	100	70	47	33
HRSantos	31	33	36	38	26	30
HSAndré-CHLP	63	46	41	38	29	27
HPCovilhã-CHCB	22	31	32	—	34	23
HESanto	—	—	28	23	25	22
HUC-CHUC	—	—	—	—	—	8
HFaro	41	47	16	10	5	4
HBraga	110	89	45	22	—	4
HSOliveira-CHAA	59	43	59	12	15	3
HSTeotónio-CHTV	61	21	4	11	8	3
HPAmérico-CHTS	—	—	90	45	21	2
HDNMendonça-SESARAM	—	—	—	1	1	2
HSSebastião-CHEDV	—	—	24	—	2	1
HGOrta	—	—	10	1	1	1
HSMarta-CHLC	2	1	1	1	1	1
HDHorta	—	—	—	6	18	—
HFFonseca	—	—	25	25	11	—
HPHispano-ULSM	—	—	40	—	8	—
HDESanto	—	—	—	4	3	—
HSBernardo-CHS	38	10	4	3	3	—
HCCabral-CHLC	3	3	—	—	2	—
HIDPedro-CHBV	—	—	54	27	—	—
HGSAntónio-CHP	—	—	4	2	—	—
HSLVCastelo-CHAM	68	47	54	—	—	—
HSJoão-CHSJ	12	8	8	—	—	—
HSCruz-CHLO	20	15	7	—	—	—
HCUFDescobertas	—	—	2	—	—	—
HGCovões-CHUC	—	—	1	—	—	—
HNSRosário-CHBM	60	44	—	—	—	—
HESSilva-CHVNGE	1	1	—	—	—	—

Doentes da Unidade Coronária Tratados com Fibrinolíticos

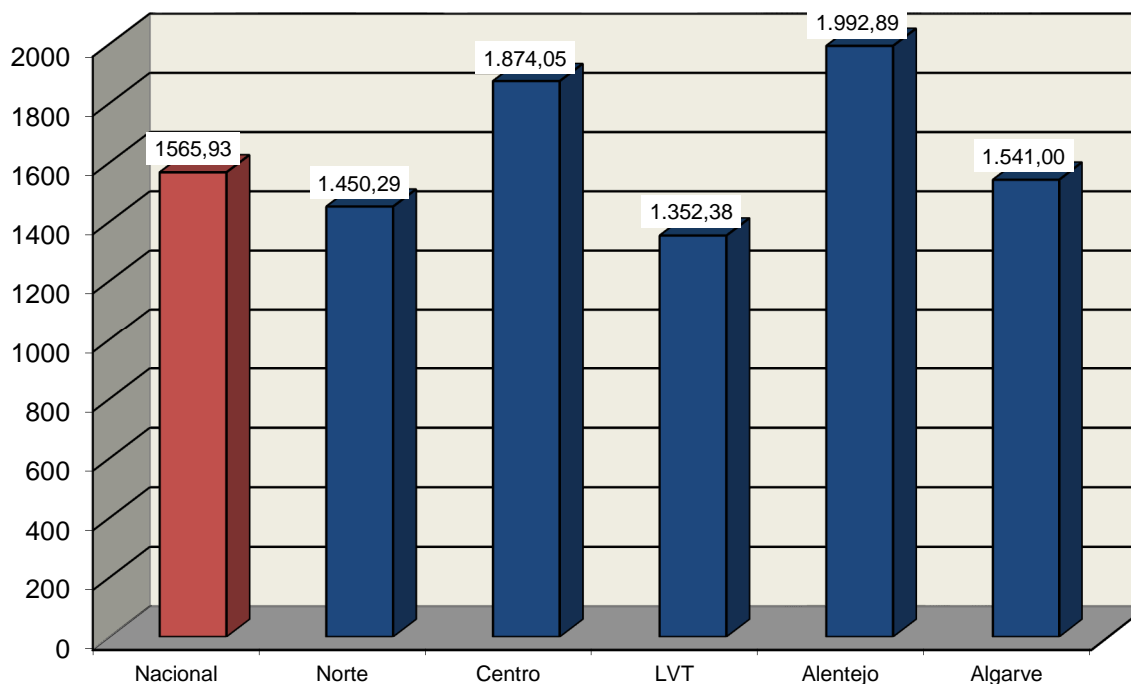


Via Verde do Acidente Vascular Cerebral

Doentes com AVC Agudo Admitidos no Hospital

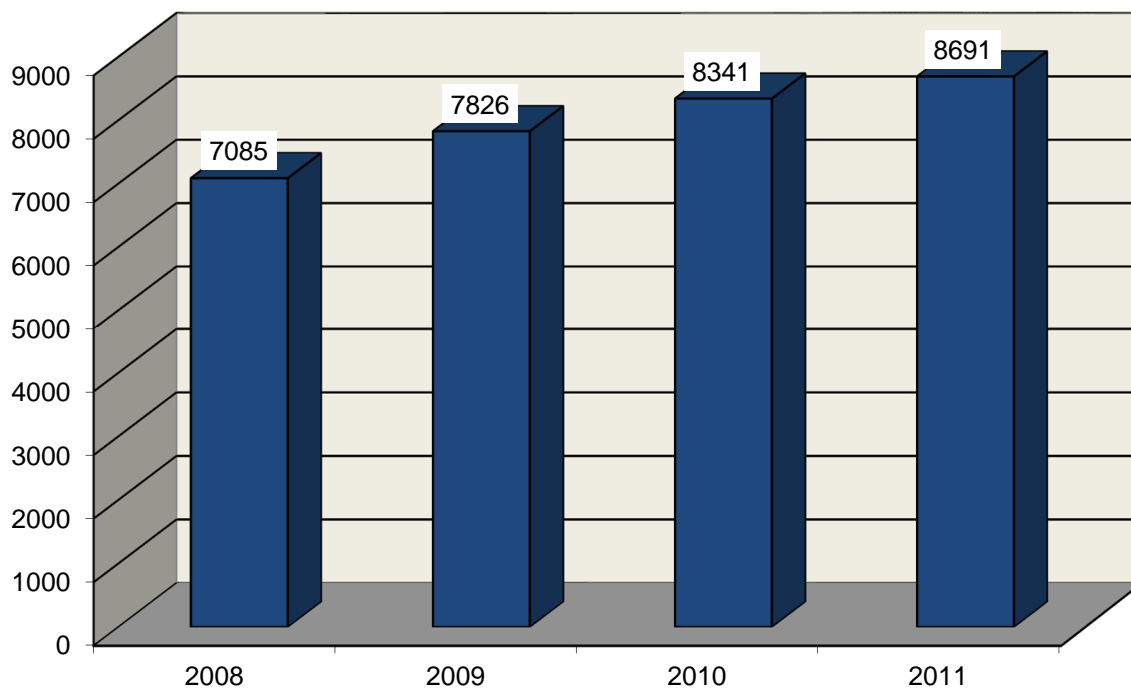


Doentes com AVC Agudo Admitidos no Hospital por Milhão Habitante (2011)

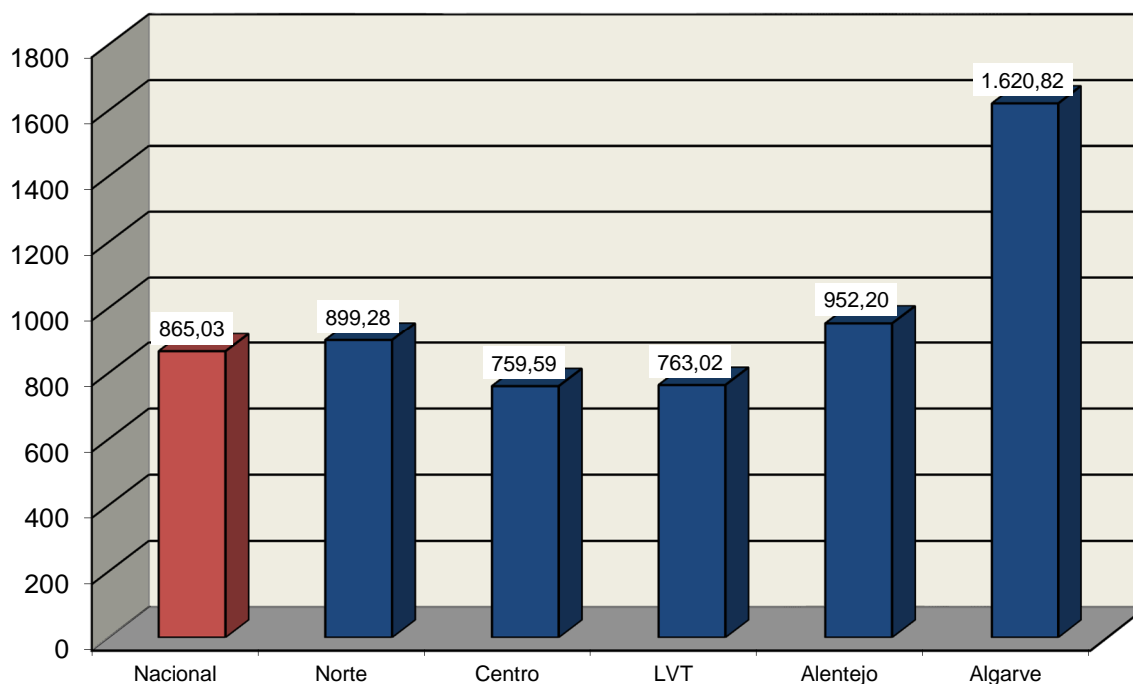


UNIDADES DE AVC

Doentes Admitidos na U-AVC



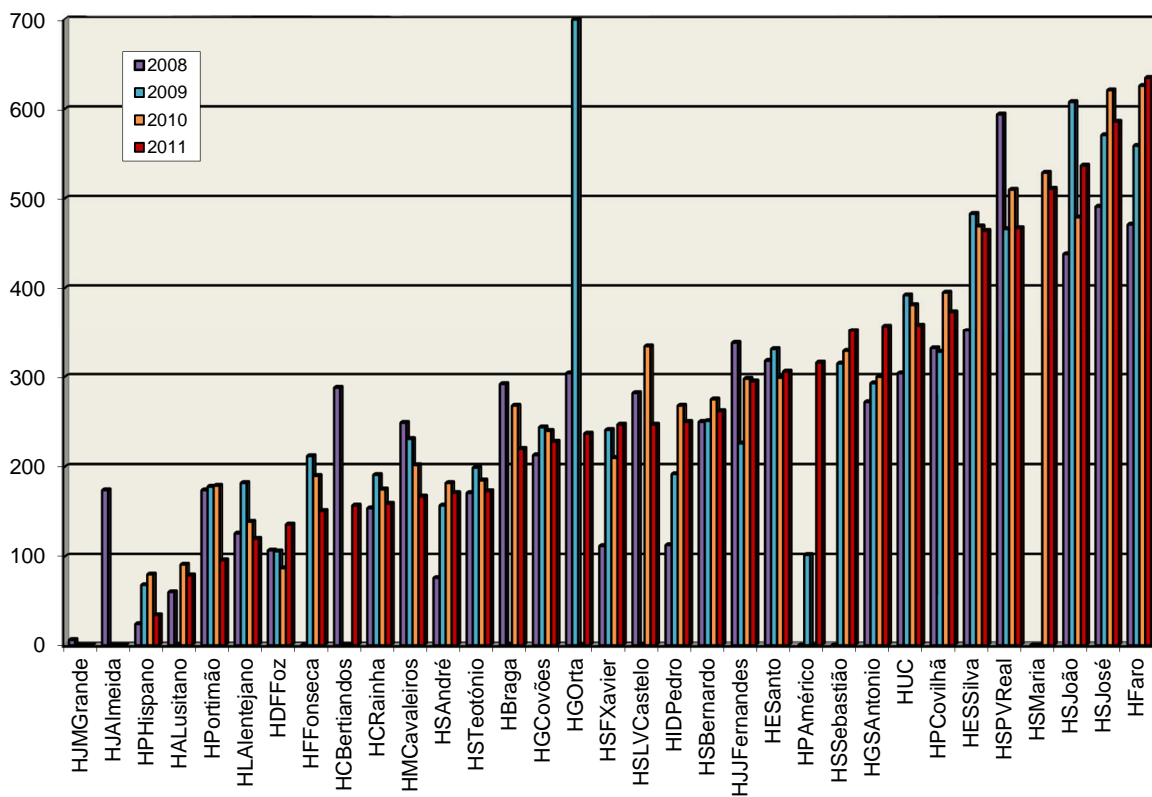
Doentes Admitidos na U-AVC por Milhão Habitante (2011)



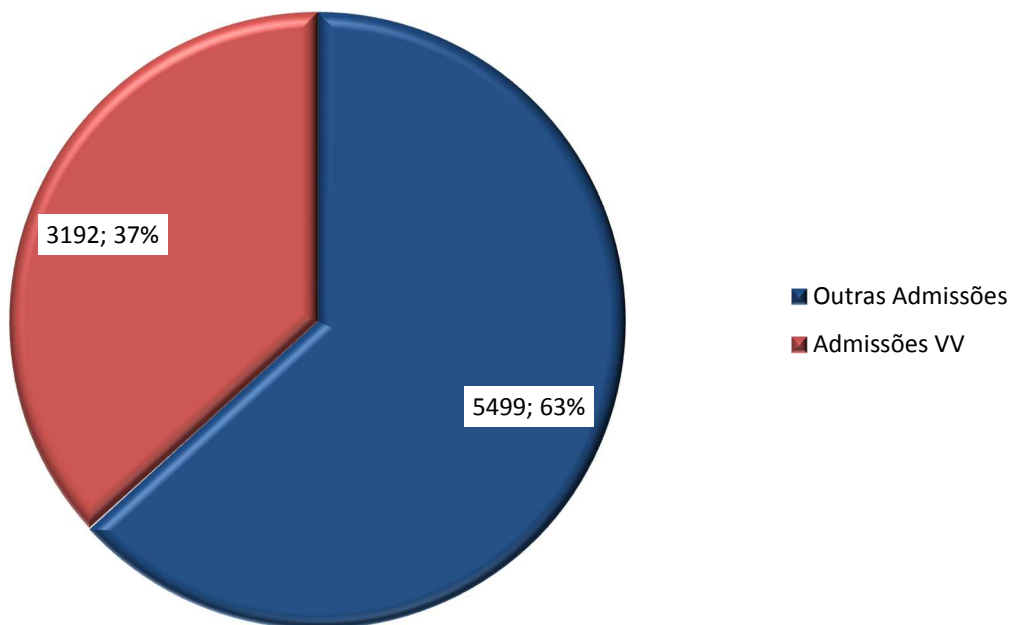


Doentes Admitidos na U-AVC	2006	2007	2008	2009	2010	2011
HFaro	—	—	471	559	626	635
HSJosé-CHLC	—	—	491	571	621	586
HSJoão-CHSJ	309	469	438	608	479	537
HSMaria-CHLN	—	—	—	—	529	511
HSPVReal-CHTMAD	515	582	594	466	510	467
HESSilva-CHVNGE	38	255	352	483	469	464
HPCovilhã-CHCB	258	317	332	328	395	373
HUC-CHUC	293	274	304	392	381	358
HGSAntónio-CHP	—	—	272	293	300	357
HSSebastião-CHEDV	—	492	—	315	329	352
HPAmérico-CHTS	—	—	—	102	—	316
HESanto	—	—	318	331	299	306
HJFERNANDES-ULSBA	—	—	338	226	298	295
HSBernardo-CHS	—	225	250	251	275	262
HIDPedro-CHBV	—	—	113	192	268	250
HSLVCastelo-CHAM	—	—	282	—	334	247
HSFXavier-CHLO	—	—	112	241	210	247
HGOorta	—	258	304	700	—	237
HGCovões-CHUC	307	390	213	244	240	228
HBraga	—	133	292	—	268	220
HSTeotónio-CHTV	—	—	171	199	185	173
HSEAndré-CHLP	—	—	76	157	182	171
HMCavaleiros-CHN	—	—	249	231	202	167
HCRainha-CHON	—	—	154	191	175	159
HCBertiandos-CHAM	—	—	288	—	—	157
HFFonseca	—	—	—	212	190	151
HDFFoz	—	—	107	106	87	136
HLAlentejano	—	—	126	182	139	120
HPortimão-CHBA	—	—	174	178	179	96
HALusitano-ULSCB	—	15	60	—	91	79
HPHispano-ULSM	—	—	24	68	80	34
HJAlmeida	—	—	174	—	—	—
HJMGrande-ULSNA	—	—	6	—	—	—

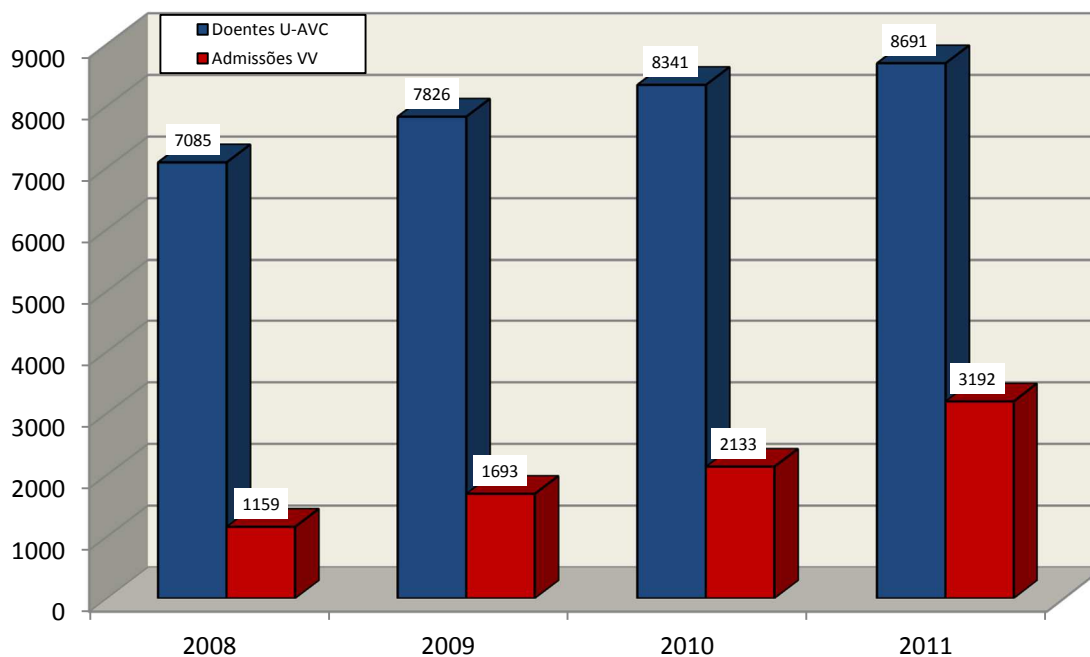
Doentes Admitidos na U-AVC



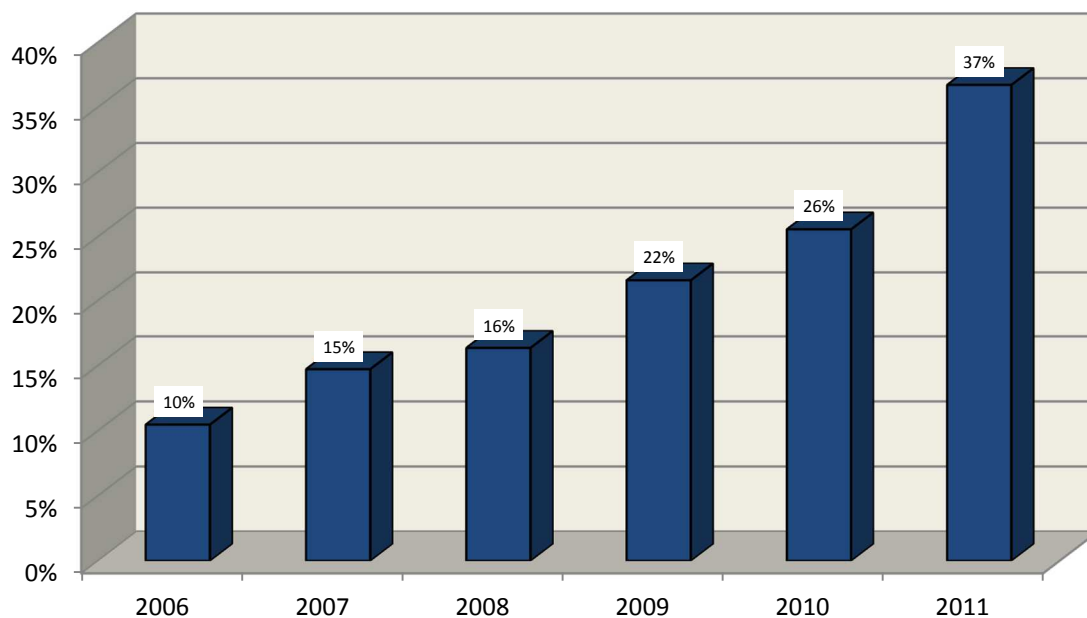
Admissões nas U-AVC através das Vias Verdes (2011)



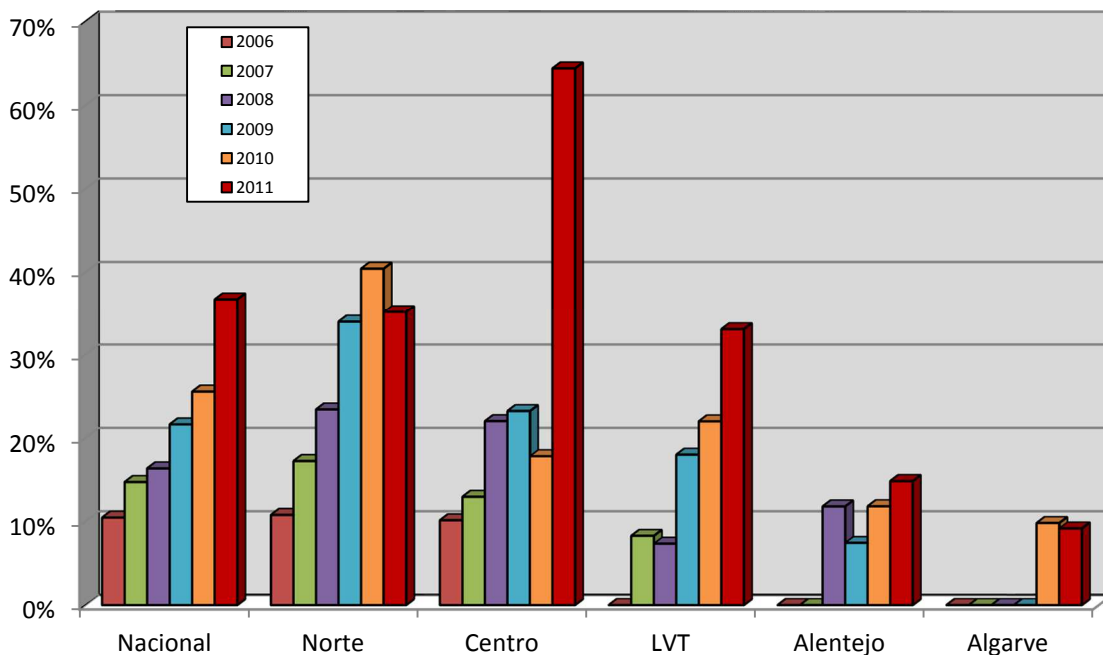
Admissões nas U-AVC através das Vias Verdes - Evolução Anual



Admissões nas U-AVC através das Vias Verdes - Evolução Anual (percentagem)

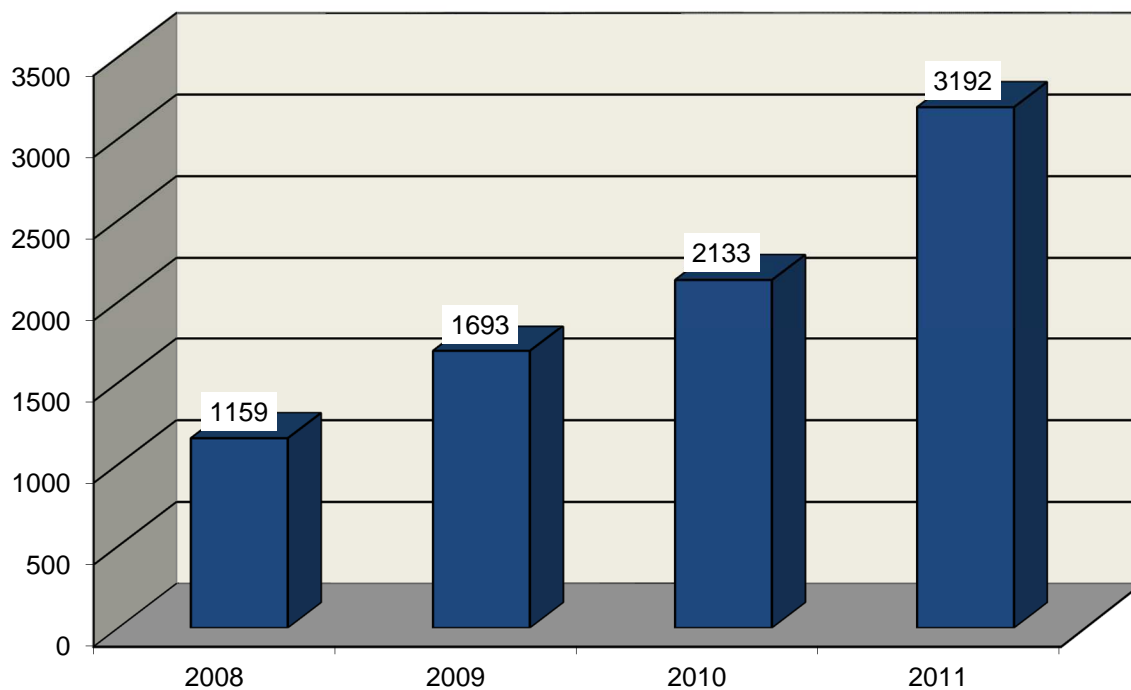


Admissões pelas Vias Verdes por Região

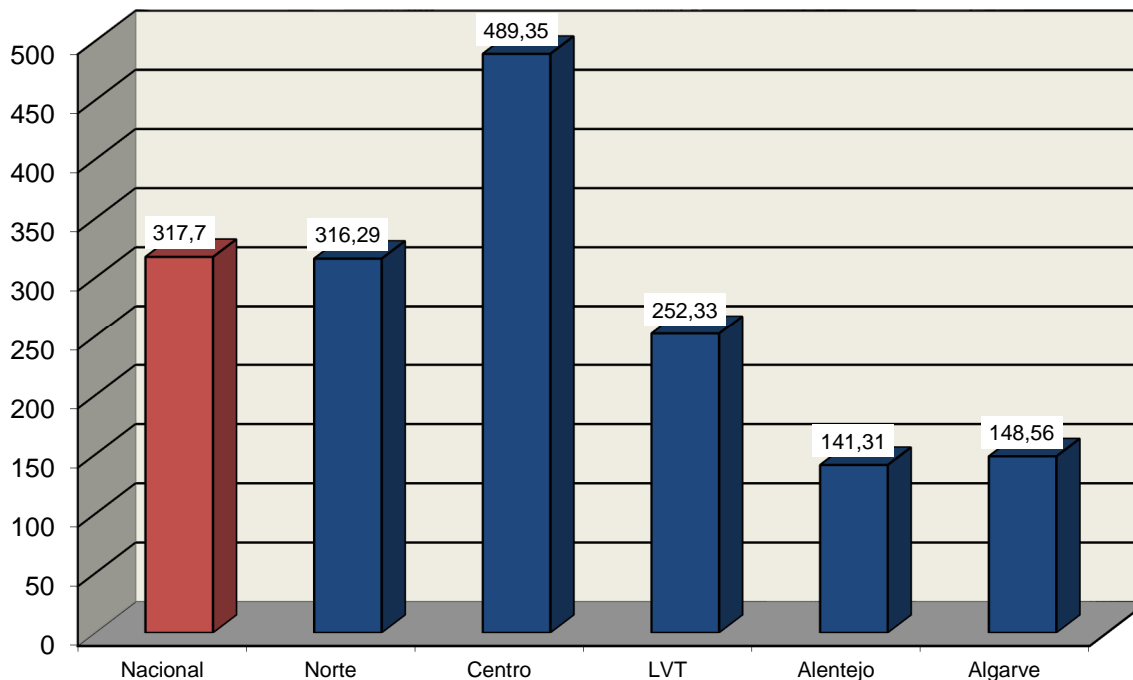


	2006	2007	2008	2009	2010	2011
Nacional	10%	15%	16%	22%	26%	37%
Norte	11%	17%	23%	34%	40%	35%
Centro	10%	13%	22%	23%	18%	64%
LVT	—	8%	7%	18%	22%	33%
Alentejo	—	—	12%	7%	12%	15%
Algarve	—	—	—	—	10%	9%

Doentes Admitidos na U-AVC pela Via Verde (INEM)

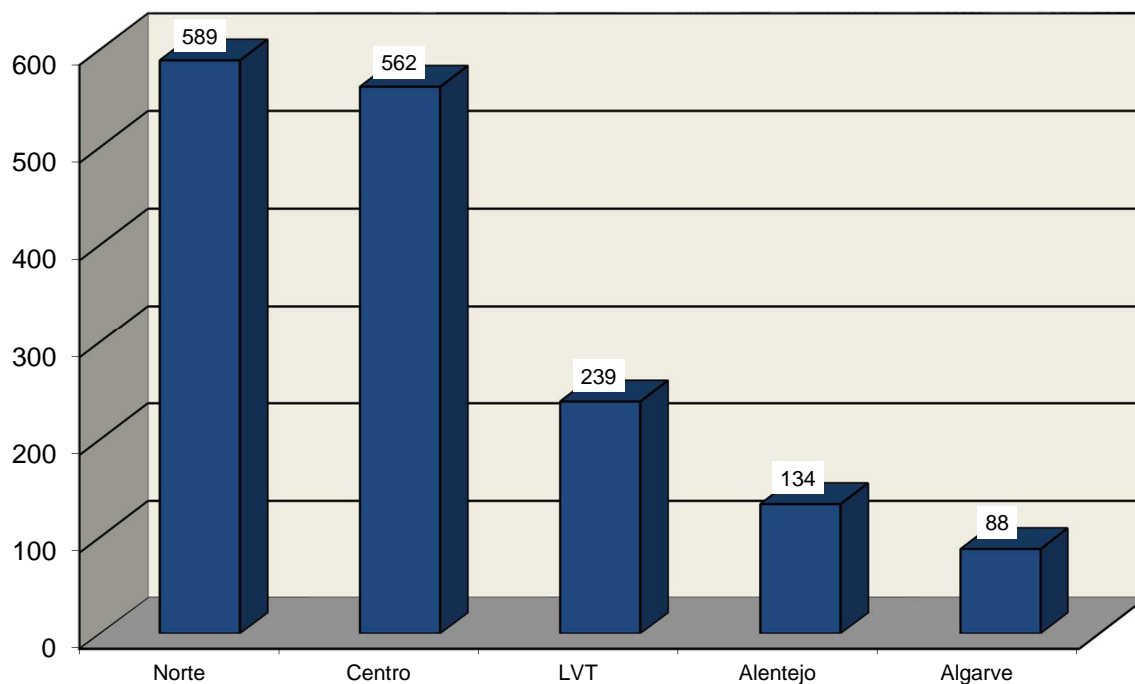


Doentes Admitidos na U-AVC pela Via Verde (INEM) por Milhão Habitante (2011)

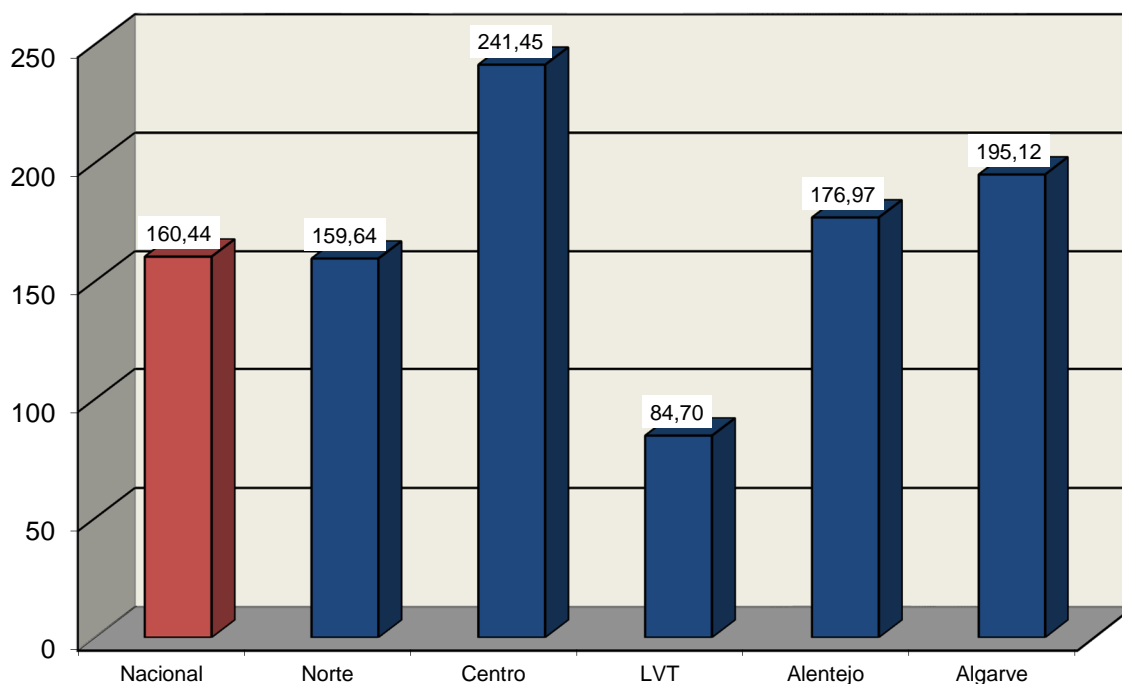


CARACTERIZAÇÃO DOS ACIDENTES VASCULARES CEREBRAIS

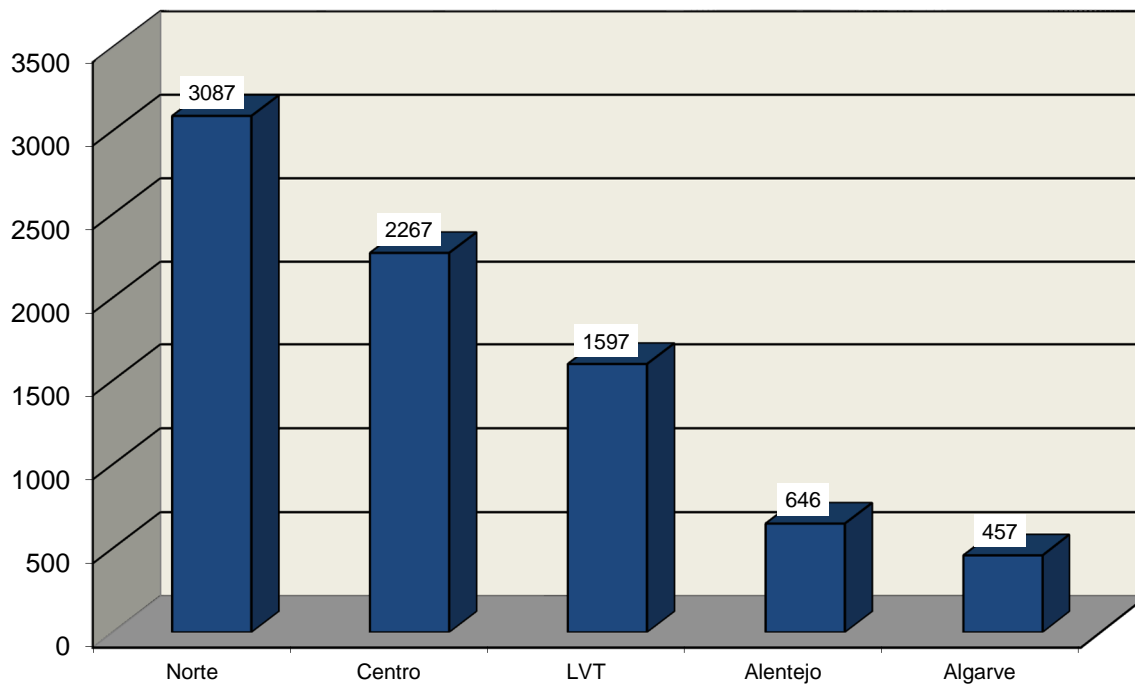
Total de AVC Hemorrágicos (2011)



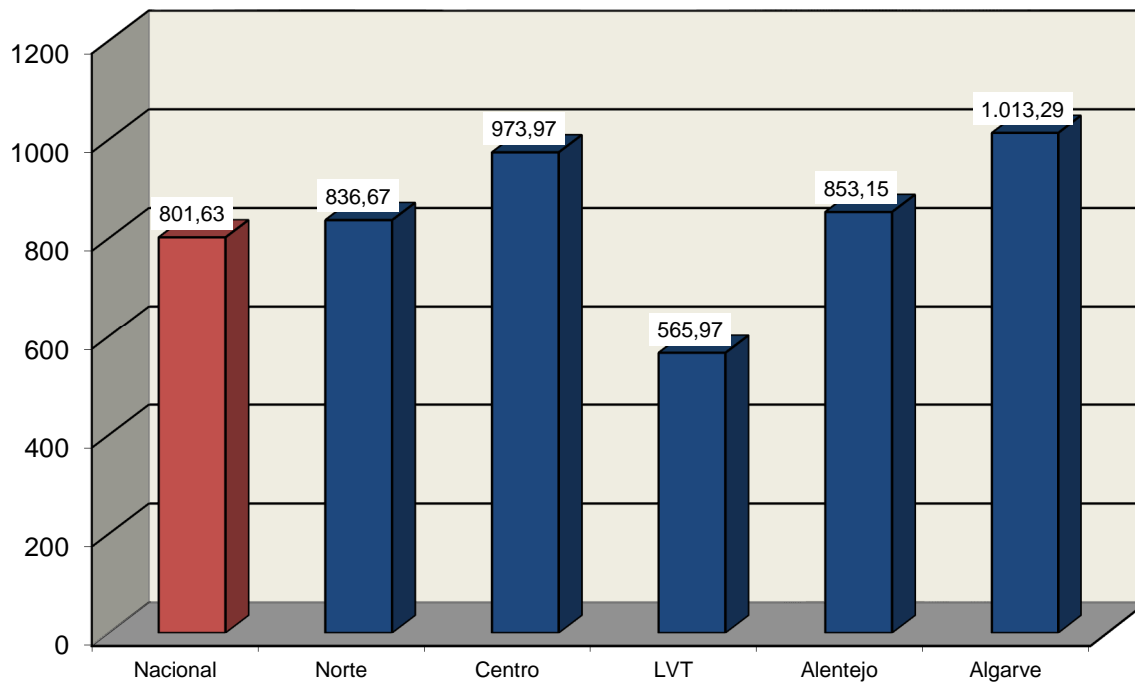
Total de AVC Hemorrágicos por Milhão Habitante (2011)



Total de AVC Isquémicos (2011)

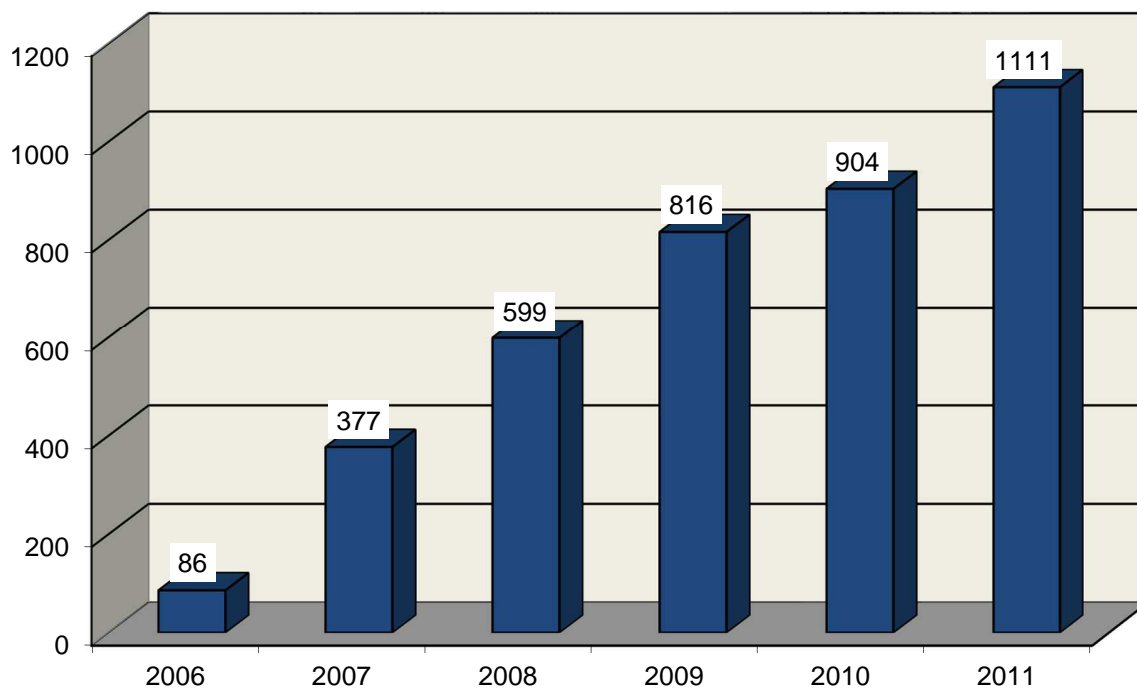


Total de AVC Isquémicos por Milhão Habitante (2011)

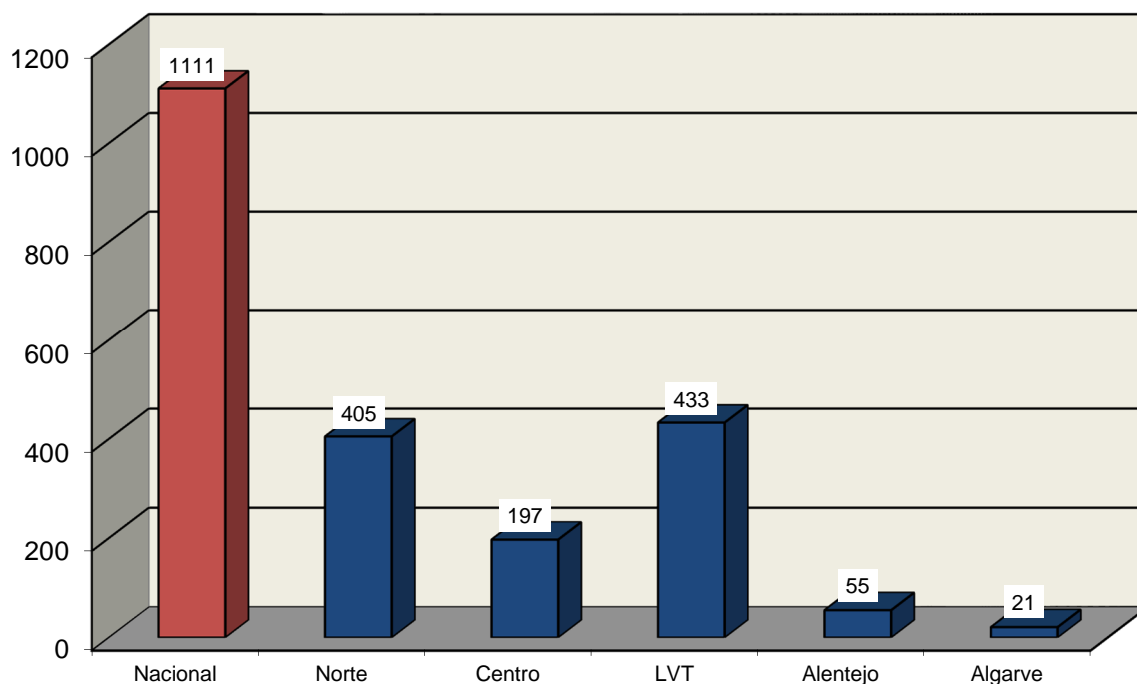


AVC – TERAPÊUTICA FIBRINOLÍTICA

Doentes da U-AVC Submetidos a Fibrinólise



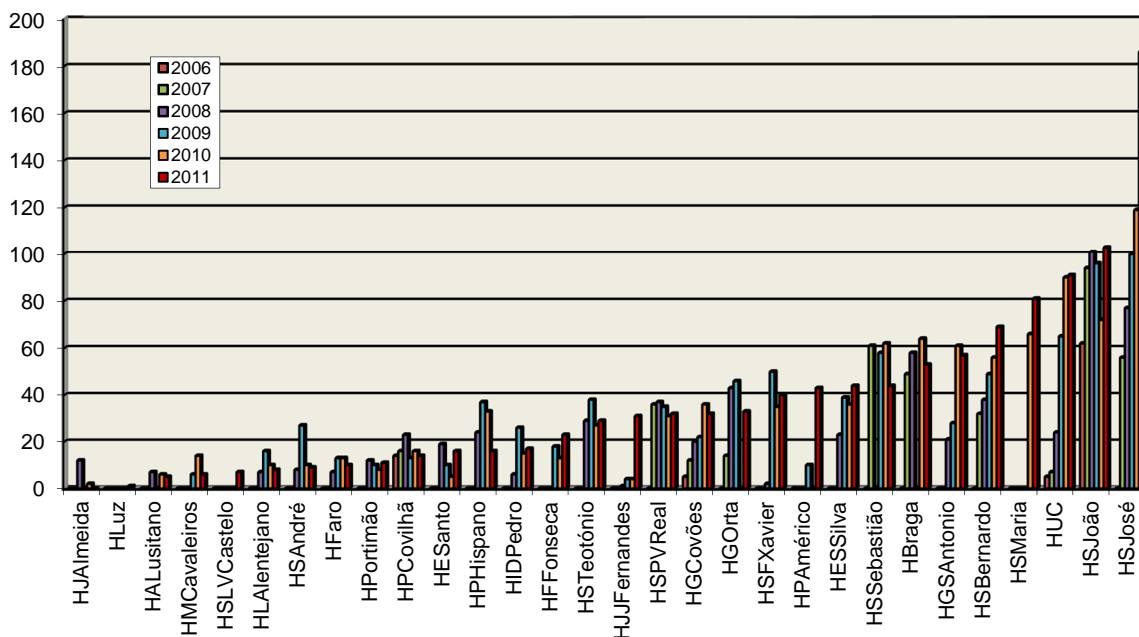
Doentes da U-AVC Submetidos a Fibrinólise (2009)





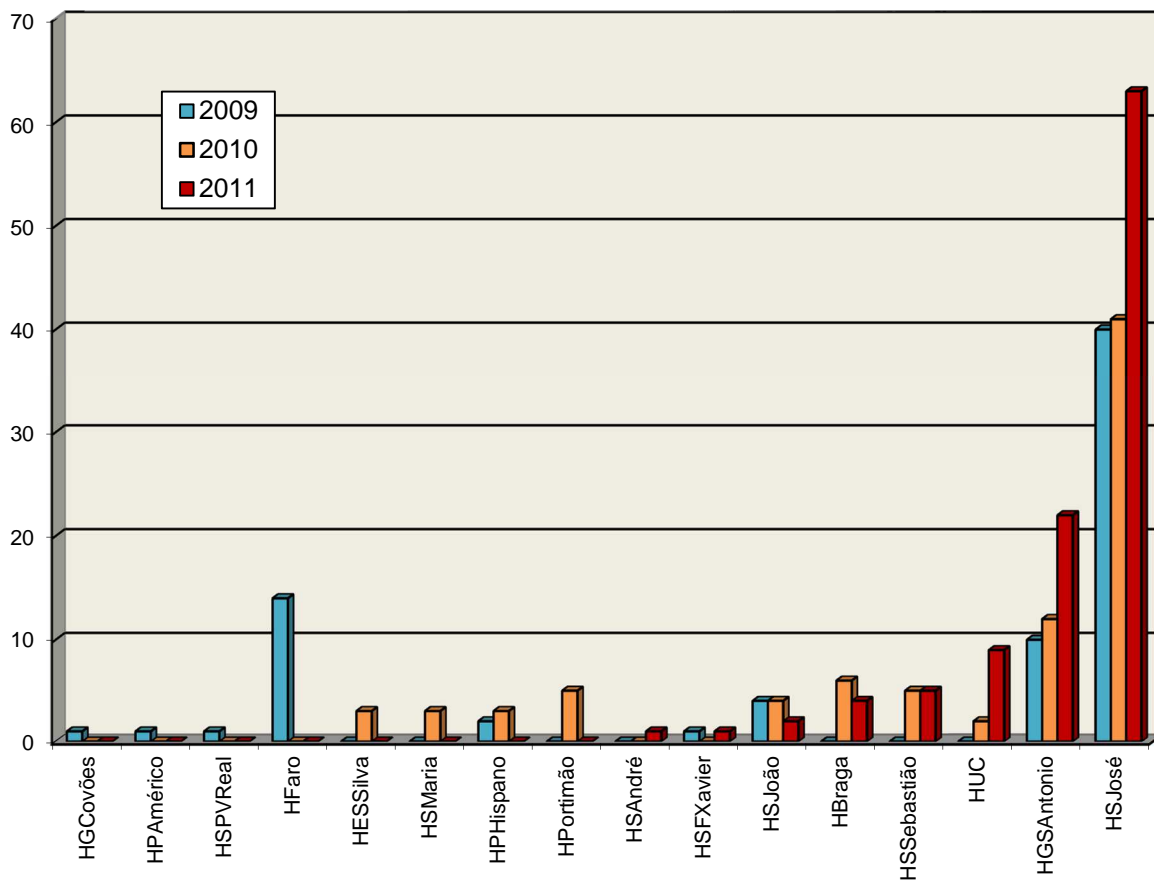
Doentes Submetidos a Fibrinólise	2006	2007	2008	2009	2010	2011
HSJosé-CHLC	—	56	77	100	119	186
HSJoão-CHSJ	62	94	101	96	72	103
HUC-CHUC	5	7	24	65	90	91
HSMaria-CHLN	—	—	—	—	66	81
HSBernardo-CHS	—	32	38	49	56	69
HGSAntónio-CHP	—	—	21	28	61	57
HBraga	—	49	58	—	64	53
HSSebastião-CHEDV	—	61	—	58	62	44
HESSilva-CHVNGE	—	—	23	39	36	44
HPAmérico-CHTS	—	—	—	10	—	43
HSFXavier-CHLO	—	—	2	50	35	40
HGOrta	—	14	43	46	—	33
HGCovões-CHUC	5	12	20	22	36	32
HSPVReal-CHTMAD	—	36	37	35	31	32
HJJFernandes-ULSBA	—	—	1	4	4	31
HSTeotónio-CHTV	—	—	29	38	27	29
HFFonseca	—	—	—	18	13	23
HIDPedro-CHBV	—	—	6	26	15	17
HPHispano-ULSM	—	—	24	37	33	16
HEsanto	—	—	19	10	5	16
HPCovilhã-CHCB	14	16	23	13	16	14
HPortimão-CHBA	—	—	12	10	8	11
HFaro	—	—	7	13	13	10
HSAndré-CHLP	—	—	8	27	10	9
HLAlentejano	—	—	7	16	10	8
HSLVCastelo-CHAM	—	—	—	—	—	7
HMCavaleiros-CHN	—	—	—	6	14	6
HALusitano-ULSCB	—	—	7	—	6	5
HLuz	—	—	—	—	—	1
HJAlmeida	—	—	12	—	2	—

Doentes da U-AVC Submetidos a Fibrinólise



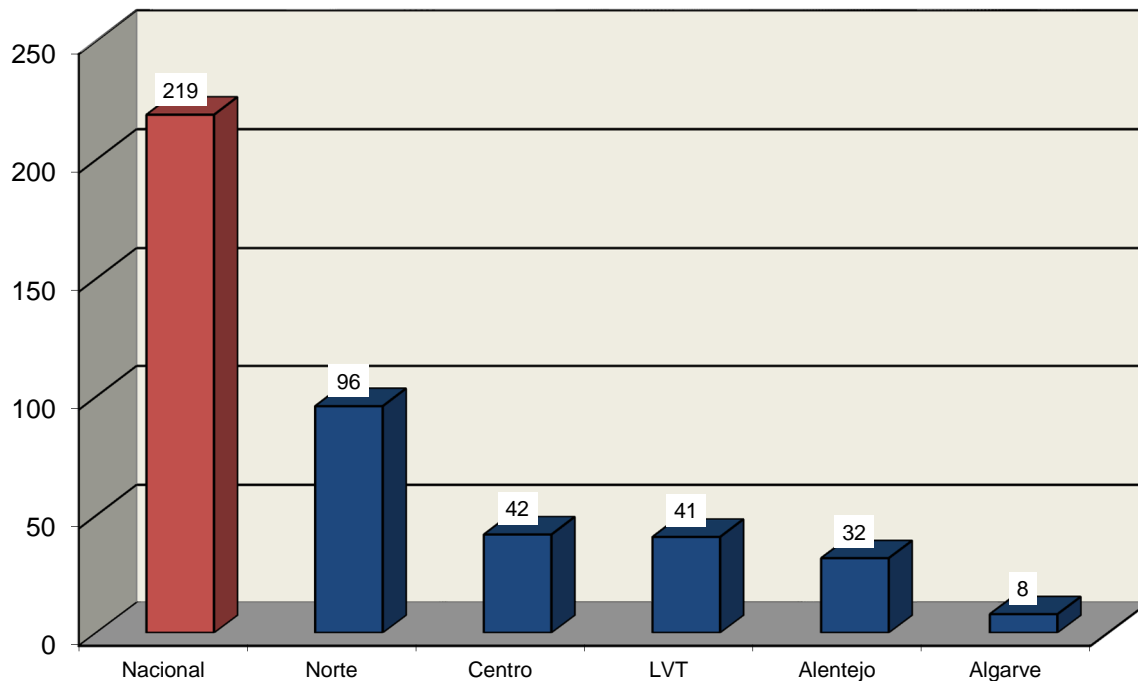
Doentes com AVC Submetidos Terapêutica Endovascular	2009	2010	2011
HSJosé-CHLC	40	41	63
HGSAntónio-CHP	10	12	22
HUC-CHUC	—	2	9
HSSebastião-CHEDV	—	5	5
HBraga	—	6	4
HSJoão-CHSJ	4	4	2
HSFXavier-CHLO	1	—	1
HSAndré-CHLP	—	—	1
HPortimão-CHBA	—	5	—
HPHispano-ULSM	2	3	—
HESSilva-CHVNGE	—	3	—
HSMaria-CHLN	—	3	—
HFaro	14	—	—
HGCovões-CHUC	1	—	—
HPAmérico-CHTS	1	—	—
HSPVReal-CHTMAD	1	—	—

Doentes com AVC Submetidos Terapêutica Endovascular

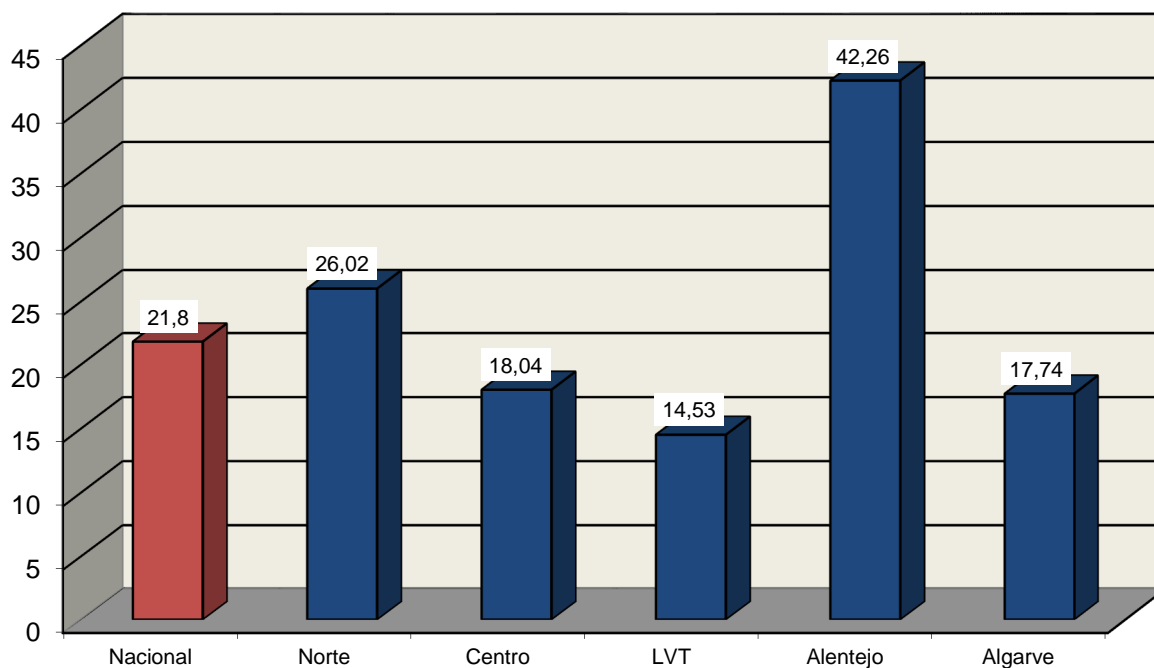


CARACTERIZAÇÃO DAS UNIDADES DE AVC

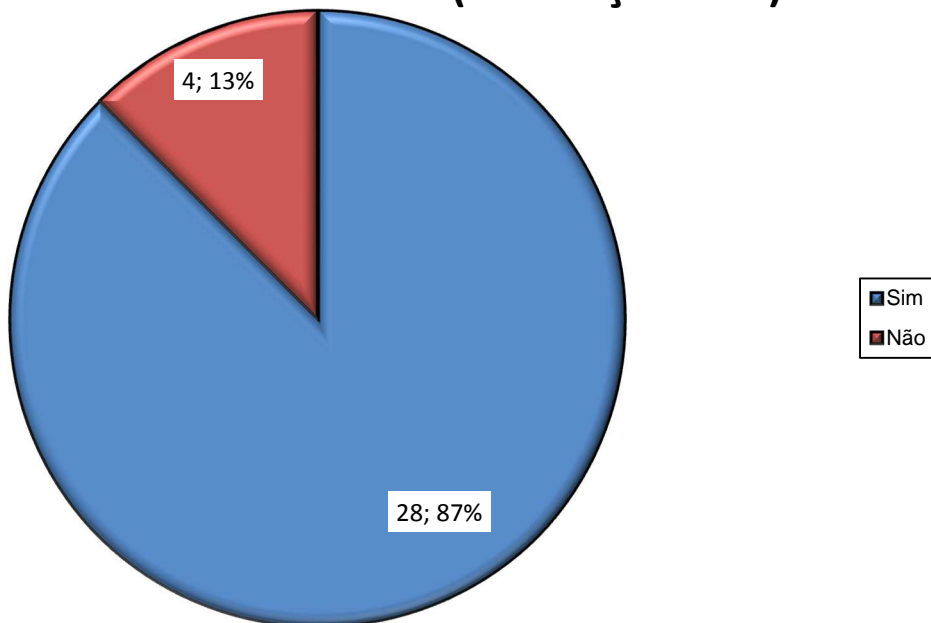
Camas U-AVC (2011)



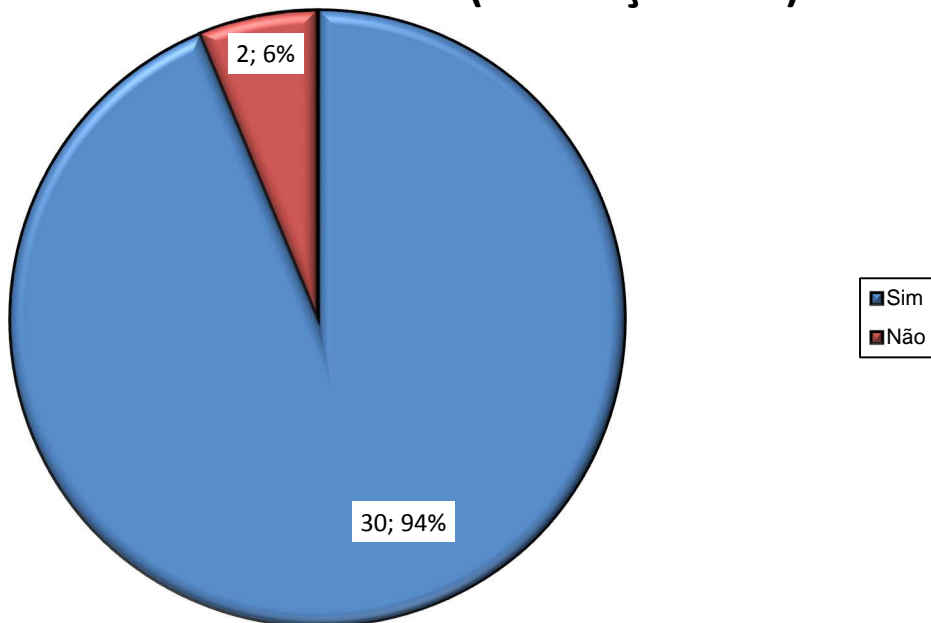
Camas U-AVC por Milhão Habitante (2011)



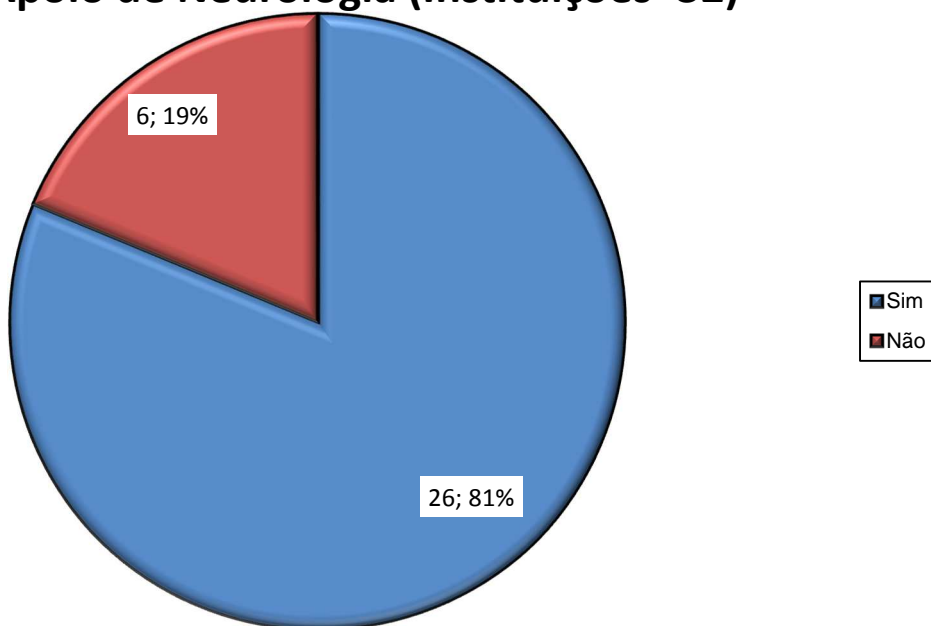
Funcionamento 24 Horas (Instituições=32)



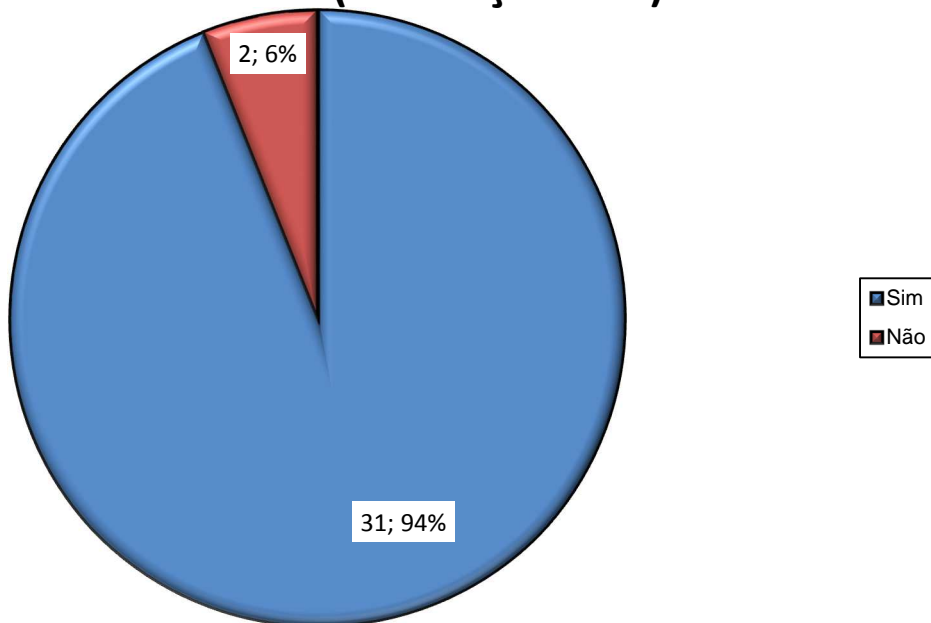
Apoio de Medicina Interna (Instituições=32)



Apoio de Neurologia (Instituições=32)



TAC 24 Horas (Instituições=33)





Instituições Contactadas

Abreviatura	Instituição
CUFISanto	Hospital CUF Infante Santo
HALusitano-ULSCB	Hospital Amato Lusitano (integra a Unidade Local de Saúde de Castelo Branco, EPE)
HBraga	Hospital de Braga
HCBertandos-CHAM	Hospital do Conde de Bertandos (integra o Centro Hospitalar do Alto Minho, EPE)
HCCabral-CHLC	Hospital Curry Cabral, EPE (integra o Centro Hospitalar de Lisboa Central, EPE)
HCRainha-CHON	Hospital das Caldas da Rainha (integra o Centro Hospitalar do Oeste Norte, EPE)
HCUFDescobertas	Hospital CUF Descobertas
HDESanto	Hospital do Divino Espírito Santo, EPE
HDFFoz	Hospital Distrital da Figueira da Foz, EPE
HDHorta	Hospital da Horta, EPE
HDNMendonça-SESARAM	Hospital Doutor Nélio Mendonça (integra o Serviço de Saúde da Região Autónoma da Madeira, E.P.E)
HDSantarém	Hospital Distrital de Santarém, EPE
HESanto	Hospital do Espírito Santo, EPE
HESSilva-CHVNGE	Hospital Eduardo Santos Silva (integra o Centro Hospitalar Vila Nova de Gaia/Espinho, EPE)
HFaro	Hospital de Faro, EPE
HFFonseca	Hospital Doutor Fernando da Fonseca, EPE
HGCovões-CHUC	Hospital Geral dos Covões (integra o Centro Hospitalar e Universitário de Coimbra, EPE)
HGORta	Hospital Garcia de Orta, EPE
HGSAntónio-CHP	Hospital Geral de Santo António (integra o Centro Hospitalar do Porto, EPE)
HIDPedro-CHBV	Hospital Infante Dom Pedro, EPE (integra o Centro Hospitalar do Baixo Vouga, EPE)
HJAlmeida	Hospital Doutor José de Almeida
HJJFernandes-ULSBA	Hospital José Joaquim Fernandes (integra a Unidade Local de Saúde do Baixo Alentejo, EPE)
HJMGrande-ULSNA	Hospital Doutor José Maria Grande (integra a Unidade Local de Saúde do Norte Alentejano, EPE)
HLAlentejano	Hospital do Litoral Alentejano, EPE
HLusíadas	Hospital dos Lusíadas
HLuz	Hospital da Luz
HMCavaleiros-CHN	Hospital de Macedo de Cavaleiros (integra o Centro Hospitalar do Nordeste, EPE)
HNSRosário-CHBM	Hospital de Nossa Senhora do Rosário, EPE (integra o Centro Hospitalar Barreiro Montijo, EPE)
HPAmérico-CHTS	Hospital Padre Américo (integra o Centro Hospitalar Tâmega e Sousa, EPE)
HPCovilhã-CHCB	Hospital Pêro da Covilhã (integra o Centro Hospitalar Cova da Beira, EPE)
HPHispano-ULSM	Hospital Pedro Hispano (integra a Unidade Local de Saúde de Matosinhos, EPE)
HPortimão-CHBA	Hospital de Portimão (integra o Centro Hospitalar do Barlavento Algarvio, EPE)
HPValente-CHLN	Hospital Pulido Valente (integra o Centro Hospitalar Lisboa Norte, EPE)
HRSantos	Hospital Reynaldo dos Santos
HRSIsabel-CHMT	Hospital Rainha Santa Isabel (integra o Centro Hospitalar do Médio Tejo, EPE)
HSAMS	Hospital do SAMS
HSAndré-CHLP	Hospital de Santo André, EPE (integra o Centro Hospitalar de Leiria-Pombal)
HSBernardo-CHS	Hospital de São Bernardo (integra o Centro Hospitalar de Setúbal, EPE)
HSCruz-CHLO	Hospital de Santa Cruz (integra o Centro Hospitalar Lisboa Ocidental, EPE)



Abreviatura	Instituição
HSFXavier-CHLO	Hospital São Francisco Xavier (integra o Centro Hospitalar Lisboa Ocidental, EPE)
HSJoão-CHSJ	Hospital de São João, EPE (integra o Centro Hospitalar de São João, EPE)
HSJosé-CHLC	Hospital de São José (integra o Centro Hospitalar de Lisboa Central, EPE)
HSLVCastelo-CHAM	Hospital de Santa Luzia de Viana do Castelo (integra o Centro Hospitalar do Alto Minho, EPE)
HSMaria-CHLN	Hospital de Santa Maria (integra o Centro Hospitalar Lisboa Norte, EPE)
HSMarta-CHLC	Hospital de Santa Marta (integra o Centro Hospitalar de Lisboa Central, EPE)
HSMartins-ULSG	Hospital Sousa Martins (integra a Unidade Local de Saúde da Guarda, EPE)
HSOliveira-CHAA	Hospital da Senhora da Oliveira (integra o Centro Hospitalar do Alto Ave, EPE)
HSPVReal-CHTMAD	Hospital de São Pedro de Vila Real (integra o Centro Hospitalar de Trás os Montes e Alto Douro, EPE)
HSSebastião-CHEDV	Hospital de São Sebastião (integra o Centro Hospitalar de Entre Douro e Vouga, EPE)
HSTeotónio-CHTV	Hospital de São Teotónio, EPE (integra o Centro Hospitalar Tondela-Viseu, EPE)
HUC-CHUC	Hospitais da Universidade de Coimbra, EPE (integra o Centro Hospitalar e Universitário de Coimbra, EPE)

FONTE:

Inquérito de atividades do Programa Nacional para as Doenças Cérebro-Cardiovasculares – Abril 2012